

ULTRASCAN

Leak Detection

A new generation of instrument, combining the latest technology with many years of experience, to deliver the best-performing and easiest to use leak detector....

- Simple, easy to use controls
- Audio detection of leaks
- Simple visual indication of leaks
- Small, portable, hand-held unit
- Automatically filters out noise
- Auto-ranging gain control
- 30° and 3° waveguide attachments
- Flexible waveguide attachment
- Rechargeable batteries
- Ergonomic design
- Belt-clip attachment
- Can be used with a laser pointer



The presence of leaks in compressed air, steam, gas and other high-pressure plant has two major consequences: cost and safety.

The cost of producing steam and air is proportional to the amount of losses through leaks; the less a plant leaks, the more efficient it is. Without an active maintenance programme typically 20% of boiler generated steam can be lost through leaks. After implementing a leak audit one factory owner in the USA, who runs an aluminium wheel plant,

calculated over \$140,000 in compressed air savings.

Safety strategies when dealing with leaks are essential. Superheated steam and compressed air are often invisible and highly dangerous to personnel working in such environments. The ULTRASCAN Leak Detector is designed to give you a solution to leak/cost and leak/safety issues. It detects leaks by focussing on the ultrasonic noise they generate. From years of experience and product development ULTRASCAN has evolved into the most sensitive

instrument of its type and can detect the smallest of holes or cracks in pipework and vessels. The unit also auto-ranges, so the operator is always working at the maximum sensitivity to suit their environment.

The presence of leaks is indicated by three simple lights on the front panel [see illustrations over]. A discrete in-ear headset enables the operator to accurately listen to the leak and still be able to wear additional ear defenders; increasing operator safety and maintaining safety standards.



www.e2i.uk.com

Technical Details

Maximum Range:

35m typical [leak size dependant]

Maximum Gain:

143dB

RF Response:

38kHz to 42kHz [+3dB]

10kHz <- 40dB

100kHz <- 40dB

Effective Scan Area:

30° cone/3° cone/enclosed volume
[depends on wave-guide]

Autoranging:

Flashing green LED until set

Display:

3 red LEDs proportional to signal

Audio:

Earpieces with volume control

Low Battery Warning:

Yes, fast flashing green LED

Power Source:

Rechargeable

Power Saving:

Timeout switch off, or ON/OFF

Material:

ABS and Acetyl Copolymer

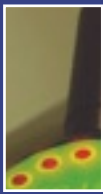
Environmental:

IP44

Size:

Body: 128 x 70 x 28mm

Waveguide: 60 x 19mm diameter



Operation

- Choose a waveguide [30° for general scans]
- Switch the instrument 'ON'
- Press 'SEEK'
- Wait until the green LED stops flashing
- Adjust the audio volume until it is comfortable
- Point the waveguide at suspect plant or equipment
- Observe activity on red LEDs, and listen for leaks
- Identify leaks
- If the source is not obvious and needs a more accurate pointer, change to the 3° waveguide & repeat



Your local ULTRASCAN distributor is:

--