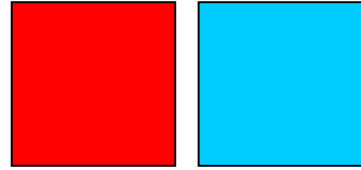


MegaBee



Application Note: ***Setup problems with Bluetooth internal hardware on Windows based computers.***



APPLIES TO: MEGABEE VERSIONS 3.5 OR EARLIER. THE SOFTWARE VERSION NUMBER IS DISPLAYED ON THE OPENING SCREEN WHEN MEGABEE IS SWITCHED ON.

1.0 INTRODUCTION

Very occasionally users have problems with the way their computers configure themselves for Bluetooth communication with MegaBee.

Certain combinations of Bluetooth setup wizards, reconnection requirements, and the user being forced to either pair the devices or apply security access, has given rise to some confusion.

Except with Vista all but one combination of Windows (various releases) and internal and external hardware we have tested have worked – the only problem during testing phase was observed with a Broadcom 2045 Bluetooth internal hardware module running WIDCOMM software on Windows XPpro SP2. Various discussion forums were accessed and there seems to be many problems with this combination working as expected for all sorts of BT devices.

In order to overcome this issue E2L stock a known Bluetooth solution in the form of an external USB Bluetooth modem.

A report of a similar problem has been made running Vista, and from a third party Bluetooth module of unknown origin. In particular trying to connect in the 'DISPLAY' program causes a connection wizard to be evoked which requires a security key. (Vista has a known bug which Microsoft refuse to address – they allow you to set up a Bluetooth link without security access, but from then on won't allow you to use it! – unfortunately for MegaBee users who wish to use versions up to 3.5 with Vista the only solution is to use an external Bluetooth Dongle which allows communication without a passkey)

The purpose of this note is to present some possible configuration solutions.

(Incidentally – even though we overcame the configuration problems the hardware device presented which enabled the DISPLAY program to be used, the VOCABULARY program always blue-screen using the Broadcom internal hardware – if you have Broadcom hardware we recommend an external Bluetooth dongle)

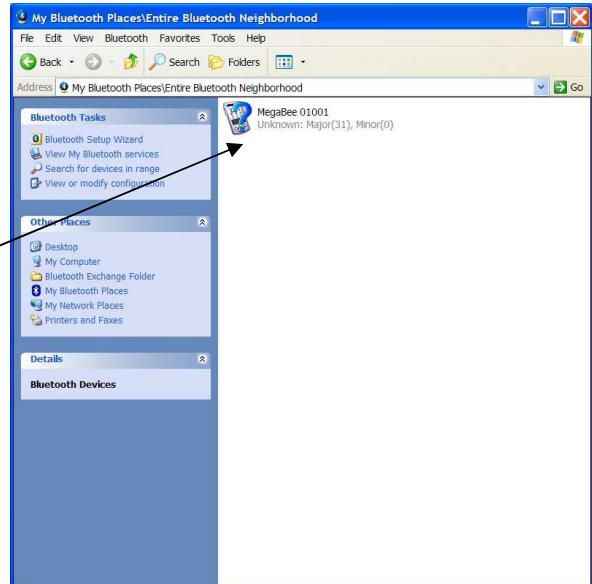
2.0 Initial COM port assignment

The following screen captures illustrate the process in finding the device and establishing a connection:

2.0.0 Open 'My Bluetooth Places' and click 'view devices in range'.

A MegaBee with a serial number should be found.

At this stage it may be possible to set the security level – right click and select 'Properties'.

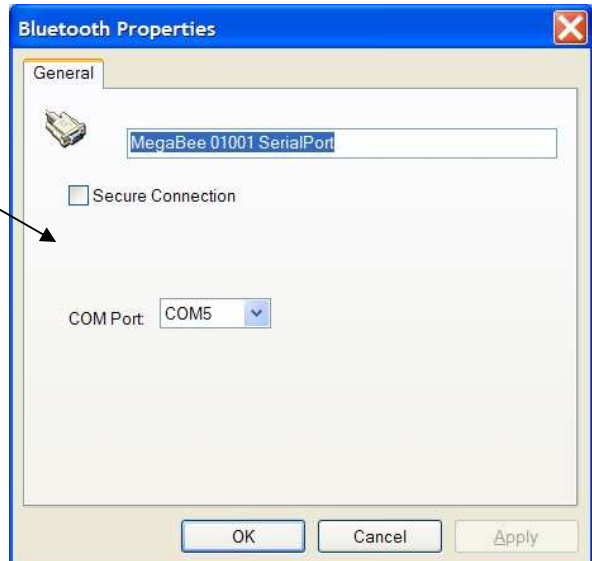


2.0.1 Open 'Properties' and ensure that the 'Secure Connection' checkbox is clear.

Click 'OK' and this should solve the secure connection problem.

2.0.2 Returning to the 'My Bluetooth Places' screen a connection should be established by double clicking on the MegaBee icon.

Once connected it provides the name of the COM port that has been established for it.



2.1 Using the Bluetooth Setup Wizard

The Bluetooth setup wizard varies according to operating systems and their releases, and the licenced Bluetooth driver software. However, below is a typical setup wizard:

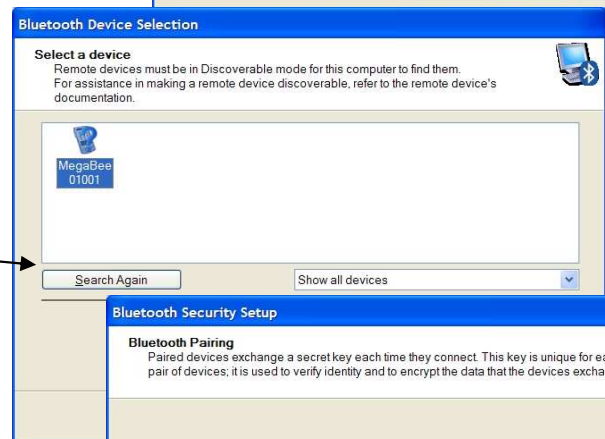
2.1.0 Opening screen

From the 'My Bluetooth Places' screen click on the setup wizard. As you know the device you are looking for select 'I want to find a specific Bluetooth device and configure how this computer will use its services.' Press 'NEXT'



2.1.0 Device selection

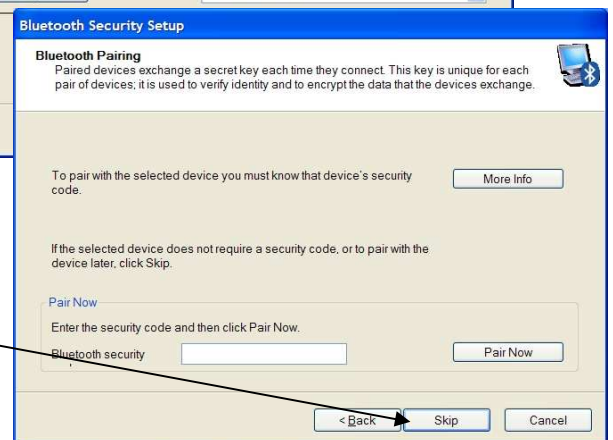
Make sure the MegaBee is switched ON. It should be found by the software and displayed. If not press 'Search Again'.



Once it is found click once on the MegaBee icon to select it and then press 'NEXT'.

2.1.1 Security Setup

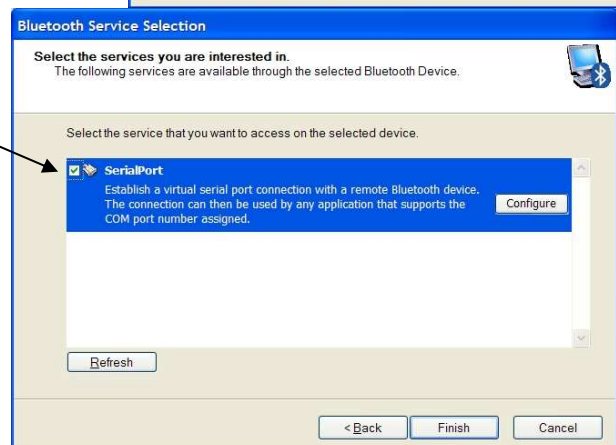
MegaBee does **not** require pairing. With this screen press 'SKIP'



2.1.2 Bluetooth Service Selection

Make sure the checkbox is ticked for 'SerialPort'.

The 'FINISH' button can then be selected.



However, just to check, if 'Configure' is selected we get the 'Properties' screen which again gives you the opportunity to deselect the security option.

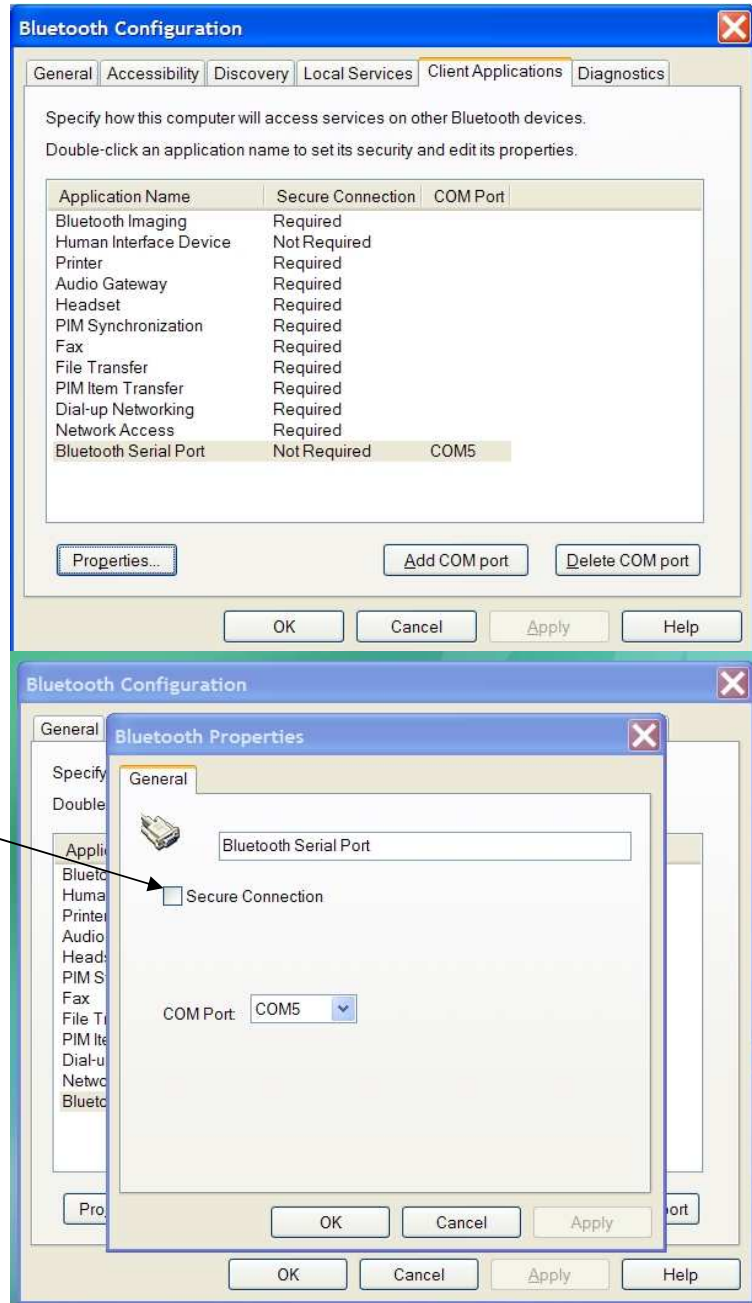
2.2 Configuring from the Control Panel

The Control Panel contains a 'Bluetooth Configuration' option. This evokes a screen which handles all the essential properties of the Bluetooth configuration.

2.2.0 Bluetooth Configuration
Selecting this option causes a configuration management screen for all your Bluetooth devices and options. Select the 'Client Applications' tab and you will see a list of the various applications – the one of relevance to MegaBee is the 'Bluetooth Serial Port'.

The important parameter to notice is its 'Secure Connection' status. In the example we can see that it is properly configured as 'Not Required' and it has been assigned to a COM port.

If the status is 'Required' select the application and then click on 'Properties'. The Properties screen appears where again you can ensure the 'Secure Connection' checkbox is clear. Click 'OK' and exit the control panel.



3.0 CONCLUSIONS

There are several methods for ensuring that security is not imposed on the Bluetooth setup but there are often problems with the windows environment. If these steps don't solve the problem then an external USB Bluetooth module is the sure solution.