



Electronic hand-held writing tablet

Manual for use with a personal computer

Note: a personal computer running Microsoft Windows and having a bluetooth communication port.

For use with MegaBee Writing Tablets with software Revision 4.00 or higher.

For use with MegaBee PC Software Suite Revision 2.00 or higher

Contents

| | |
|---|----------------|
| Computer interface | Page 3 |
| 1) DISPLAY | |
| 2) VOCABULARY | |
| 3) PICTURES | |
| Installing the software | Page 3 |
| Bluetooth COM port | Page 4 |
| MegaBee Software Utilities | Page 6 |
| The DISPLAY program | Page 7 |
| The VOCABULARY program | Page 9 |
| The PICTURES program | Page 11 |
| Appendix 1 - Printing labels | Page 14 |
| Appendix 2 - Microsoft word template | Page 17 |
| Appendix 3 - CorelDRAW template | Page 23 |
| Appendix 4 - OpenOffice.org Draw | Page 28 |

Computer interface

The **MegaBee** writing tablet is able to interface with a personal computer which has Bluetooth communication capability.

The PC software is on the CD provided as part of the **MegaBee** product, but it may also be downloaded free of charge from www.e2l.uk.com/manuals/

The purpose of linking to a computer is to provide three distinct enhancements to the **MegaBee**'s normal operation:

1) DISPLAY

MegaBee can be use the display and storage facilities of the PC to provide large screen for viewing or projection, and for storing any text which may have been written.

2) VOCABULARY

MegaBee can upload predefined messages which can act as a 'shortcut' to quicker communication. This is similar to speed dialing on telephones - a letter plus a single number gives a phrase.

3) PICTURES

MegaBee can be used in a picture display mode where the normal letters are replaced by pictures selected by the user. These are provided as peel-off labels which can be printed at home.

Installing the software

On the CD provided select the file named 'setup.exe'. This will start the installation wizard and install the software in a program file called /MegaBee/



A **MegaBee** icon will be installed on your desktop for easy access.

There are numerous different Bluetooth drivers for modern PCs and these may react in certain undefined ways. The supplied software has been tested on many systems but cannot guarantee full compatibility with all Bluetooth enabled Pcs.

Should there be any problems then a specific external Bluetooth dongle can be supplied which performs correctly. Please ask your supplier for details.

Bluetooth COM port

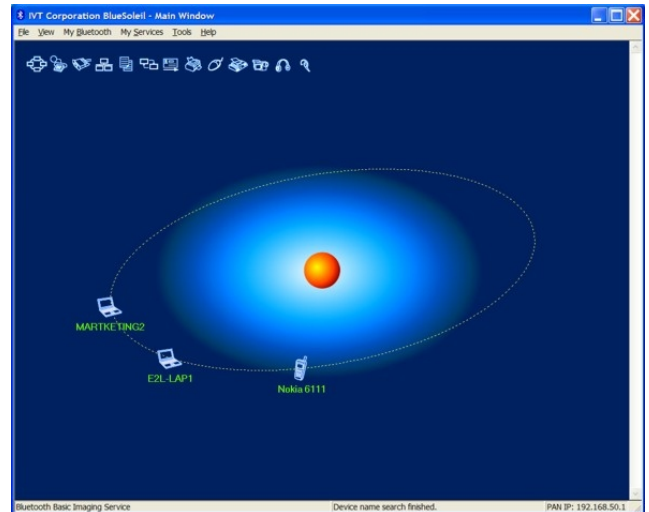
The first task is to identify the COM port address. This is the virtual port which is being used by **MegaBee** when the Bluetooth link is being used. It is quite simple to do this.

On your PC you will have a program called 'My Bluetooth Places', or 'Bluetooth Settings', or perhaps a Bluetooth icon in the task bar at the bottom of the screen.

Click on this and you should get a screen similar to:



OR



This displays any current devices that may have been previously connected. What we need to do is search for any new Bluetooth devices. To do this switch on the **MegaBee** and press the function key.

Using the UP and DOWN Grey buttons, scroll through the menu until 'TIMEOUT' is reached. Select this option and set the timeout at 5 minutes. (This is simply to avoid the **MegaBee** powering down, whilst you are trying to set up the link).

```
TIMEOUT
(UP/DOWN)      05 min
```

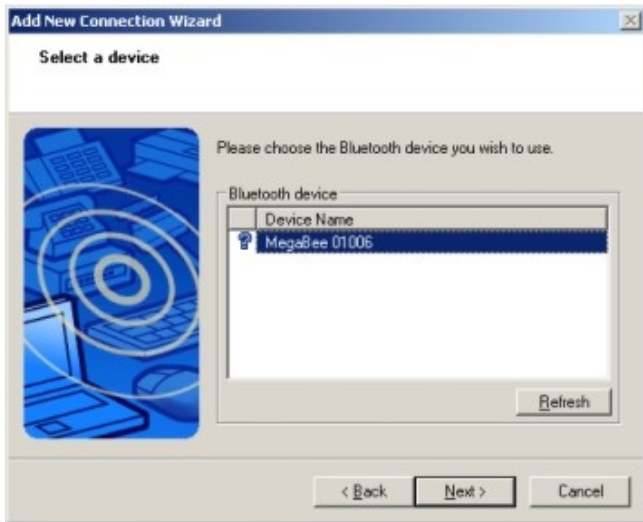
Next, scroll through the **MegaBee** function menu until you reach 'BLUETOOTH'. Select this option and choose 'ACTIVE'. Press the Grey ENTER button and then go back to normal operation (Press the black function button).

```
FUNCTION MENU
BLUETOOTH
```

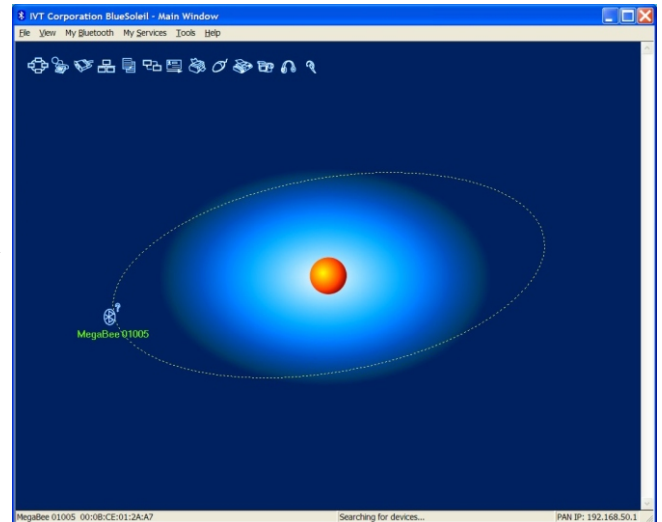
```
BLUETOOTH
ACTIVE
```

On the PC double-click on 'New Connection' or 'View devices in range'. This will make the PC search for any Bluetooth devices in range and then set-up a communication link with them.

After a few seconds the PC will have found the MegaBee and you should see a report, something like:



OR



In either case the program should find your device and it will have an identity something like “MegaBee 01234” corresponding to the serial number. (If you are using MegaBee in an area where there are several other users, this is how you know which is yours).

Note:

On some systems you may find a device called “Free2Move” the first time you use the link - this is your MegaBee but the computer hasn’t yet established a full link. If your system works in this way you have to “Discover Services” from your PC program (normally right click and select, or from the “Services” menu).

In the left-hand example above this screen tells you that MegaBee, serial number 01006, (for example), has been found in range. If you select the MegaBee by clicking on it and then click on ‘next’ the wizard will set-up the com port.

In the right-hand example, MegaBee, serial number 01005 has been located. In this system you need to right click on the MegaBee image, and select ‘connect’.

Note:

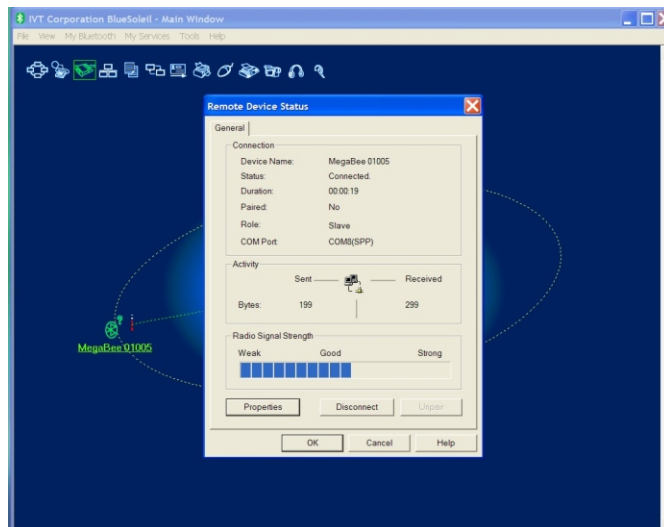
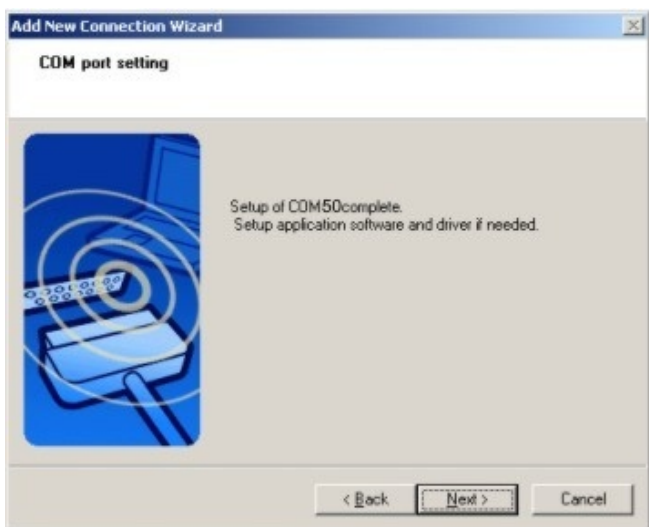
If you have a MegaBee version 3.5 or earlier then you do not need a ‘passkey’; if this is asked for by the installation wizard then click on the ‘skip’ button. For MegaBee versions 3.6 onwards the passkey you require is ‘0000’.

When complete, the wizard will tell you the number of the COM port it has assigned.

Examples of both systems are shown on the next page.

In this particular case the COM port the PC has assigned is 'COM50'.

With this system right click and select 'status'. The COM port the PC has assigned is 'COM8'.



Make a note of this number as you will need it later.

MegaBee Software Utilities

To start the software suite click on the MegaBee icon or select 'MegaBee' from the program list.



A small selection screen will appear from which you must choose 'Display', 'Vocabulary', or 'Pictures'.



Select one of the three tasks, and you will then enter the main programs.

The DISPLAY program

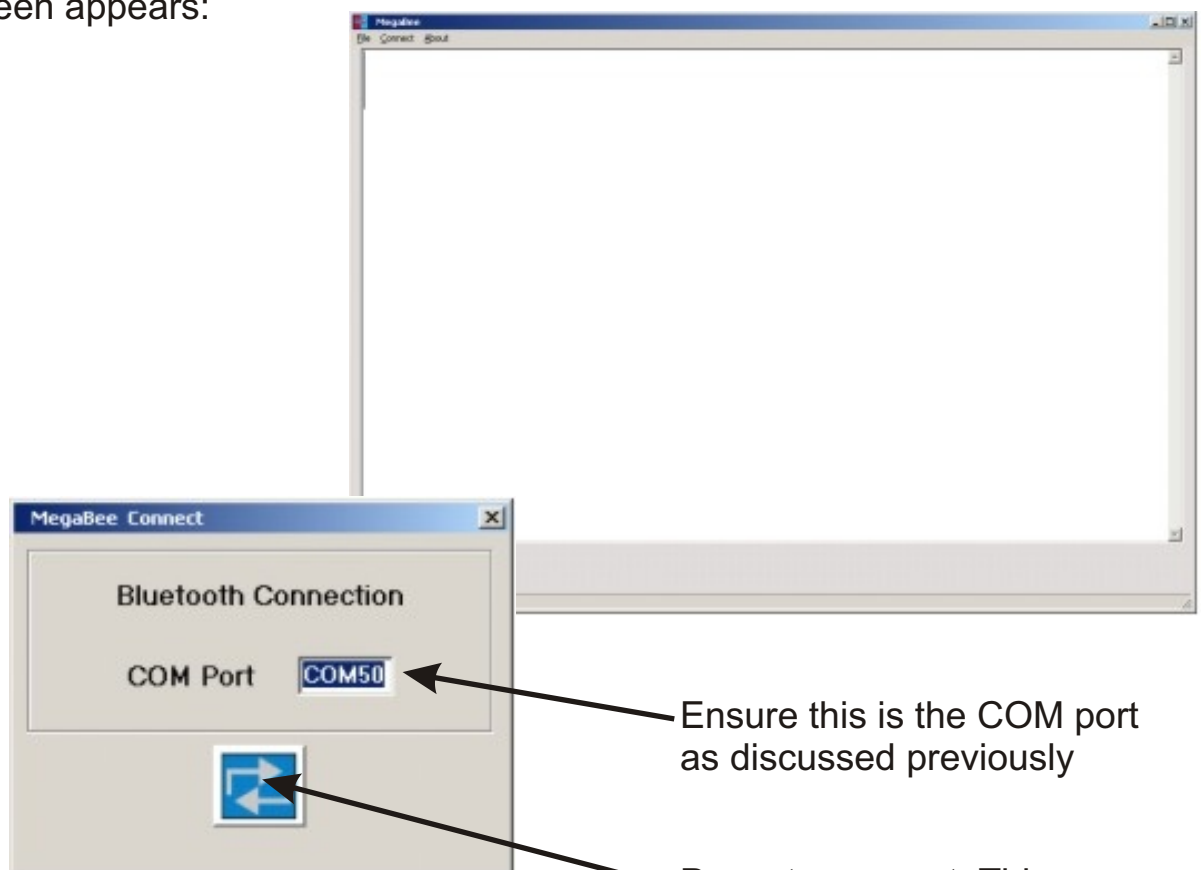
The DISPLAY program allows any text written on the **MegaBee** to be downloaded and displayed, either as character by character, or as a memory transfer.

However the first operation is to connect to the **MegaBee**. Ensure the **MegaBee** is 'ON' and Bluetooth is 'ACTIVE'.



Select 'Display' from the starting screen shown on the previous page. This will provide the basic display screen.

To use this facility we must connect the computer to the **MegaBee**. This is done by clicking on the connect menu. The following pop-up screen appears:



Ensure this is the COM port as discussed previously

Press to connect. This screen will disappear and the main display is ready to use.

*On the **MegaBee** unit:*

For character by character transfer, simply use the unit as normal and any character typed will be displayed simultaneously on the computer screen in a large format.

If you want to save everything that has already been written in then the contents of **MegaBee** can be sent to the display program. For this feature enter the function menu and select 'DOWNLOAD'.



```
DOWNLOAD
UP/DOWN TO DOWNLOAD
```

Pressing UP or DOWN will send all the whole contents of the **MegaBee** buffer will be sent to the computer and displayed on the screen. A 'DOWNLOAD COMPLETE' message is provided. This text can then be saved in a file on the computer if required.



```
DOWNLOAD
Complete
```

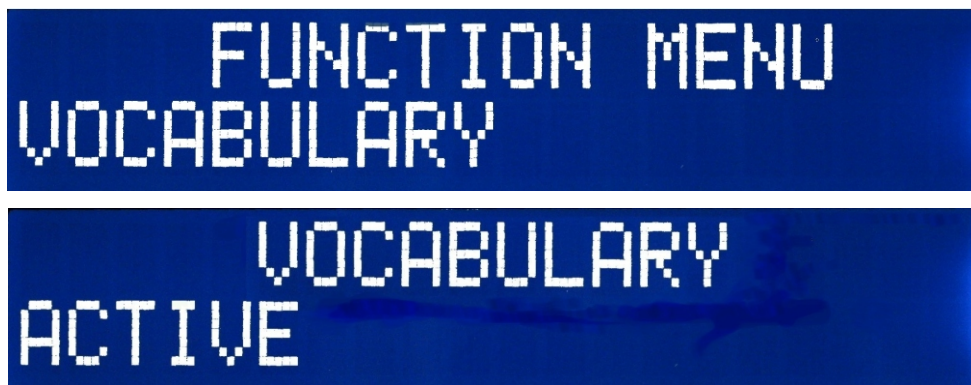
The 'File' menu allows the user to save any of the text that has been written on the **MegaBee**. Select 'Save' from the drop-down list of options and then type in a name to save the file under.

The VOCABULARY program

The VOCABULARY program is a powerful way of producing phrases and assigning them to special key sequences. It allows a maximum of 260 special phrases, all coded as a letter followed by a number; 'H2' for example, might mean 'HOT'.

Individual vocabularies can be stored for a variety of different people, and they can be customized as more frequent words become more important at certain stages of life. Vocabularies can be stored on the PC and uploaded at will, taking only a few seconds to fully load.

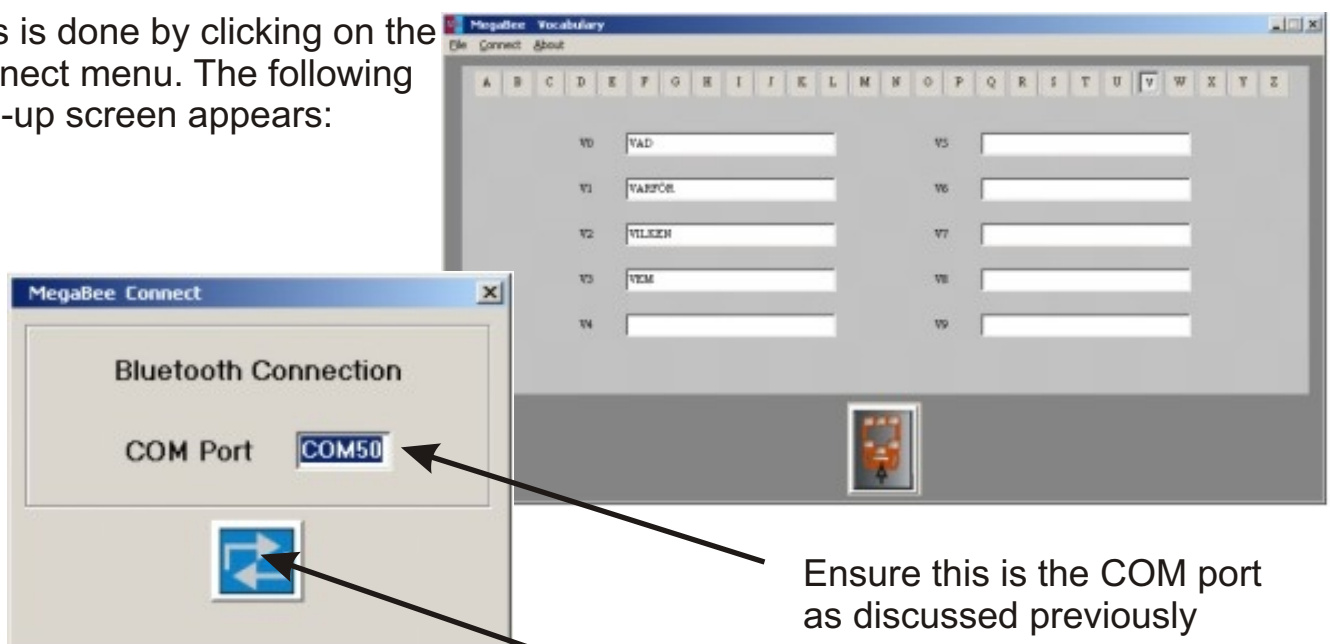
However the first operation is to connect to **MegaBee**. On the **MegaBee** itself go to the vocabulary menu and ensure it is set to 'ACTIVE'.



Stay in the 'ACTIVE' mode (Do NOT press the enter key).

Now the computer needs to connect with your **MegaBee**.

This is done by clicking on the connect menu. The following pop-up screen appears:



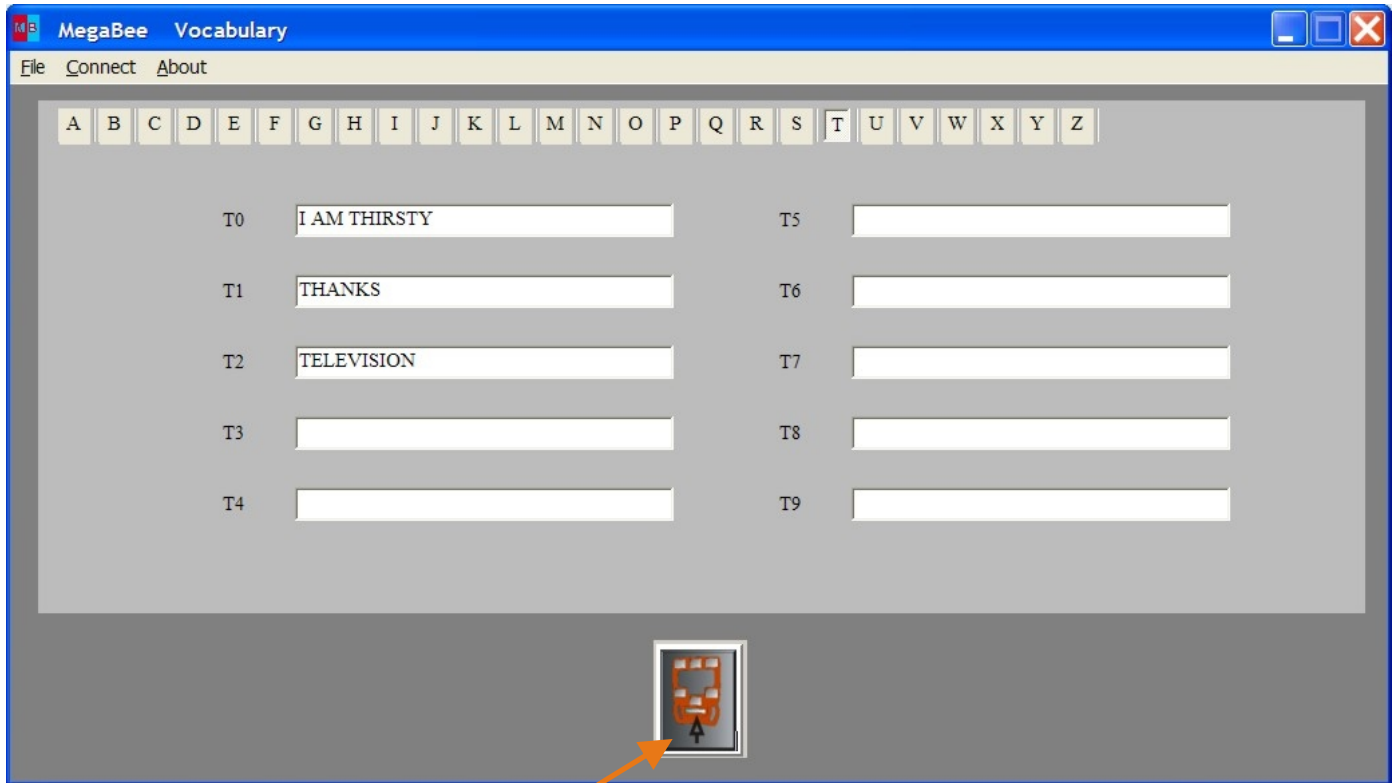
Ensure this is the COM port as discussed previously

Press to connect. This screen will disappear and the main display is ready to use.

A new vocabulary can now be loaded using the 'Open' option in the file menu. Similarly new vocabularies can be saved for later use, or use in particular situations, or for several people, by using the 'Save' option.

Alternatively, new words can be added directly from the screen. For example:

To make 'T0' shorthand for 'I am thirsty', select the letter 'T' button, and in the white box next to 'T0' type in 'I am thirsty'. This can now be sent to the **MegaBee** by pressing the upload icon. Each phrase can be up to 20 letters long.



When the 'VOCABULARY' function is ACTIVE on the **MegaBee**, click on the upload button on the computer screen.

*On the **MegaBee** unit:*

Select FUNCTION/VOCABULARY/ACTIVE. The screen will indicate upload in progress and completed. Press the function button to exit.

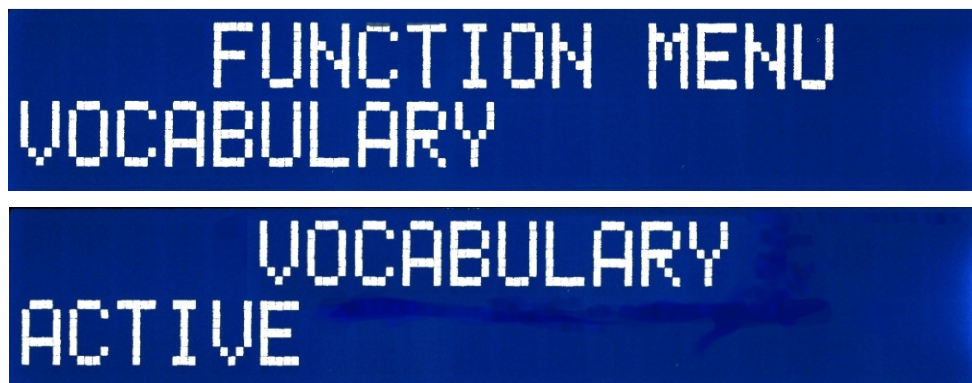
The PICTURES program

The PICTURES program allows user defined symbols or pictures to be used instead of text, for people with literacy difficulties. It allows a maximum of 36 special phrases to be associated with the pictures.

The pictures themselves, are prepared by using a template and then printing them out at home. This means that any image can be used such as photographs, drawings, cartoons or approved symbols; the choice is entirely up to the user. To prepare the stick-on labels refer to the Appendix.

This section deals with transferring the phrases associated with the pictures into the **MegaBee**. It is very similar to the VOCABULARY function described in the previous section.

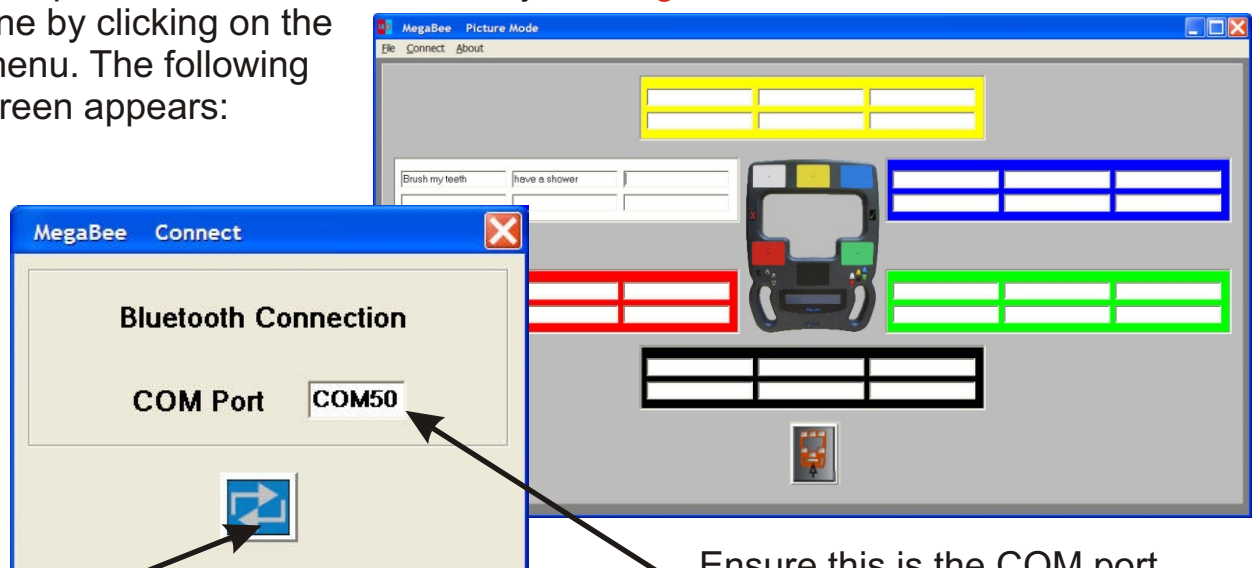
The first operation is to connect to **MegaBee**. On the **MegaBee** itself go to the vocabulary menu and ensure it is set to 'ACTIVE'.



Stay in the 'ACTIVE' mode (Do NOT press the enter key).

Now the computer needs to connect with your **MegaBee**.

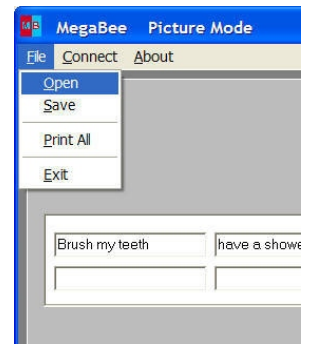
This is done by clicking on the connect menu. The following pop-up screen appears:



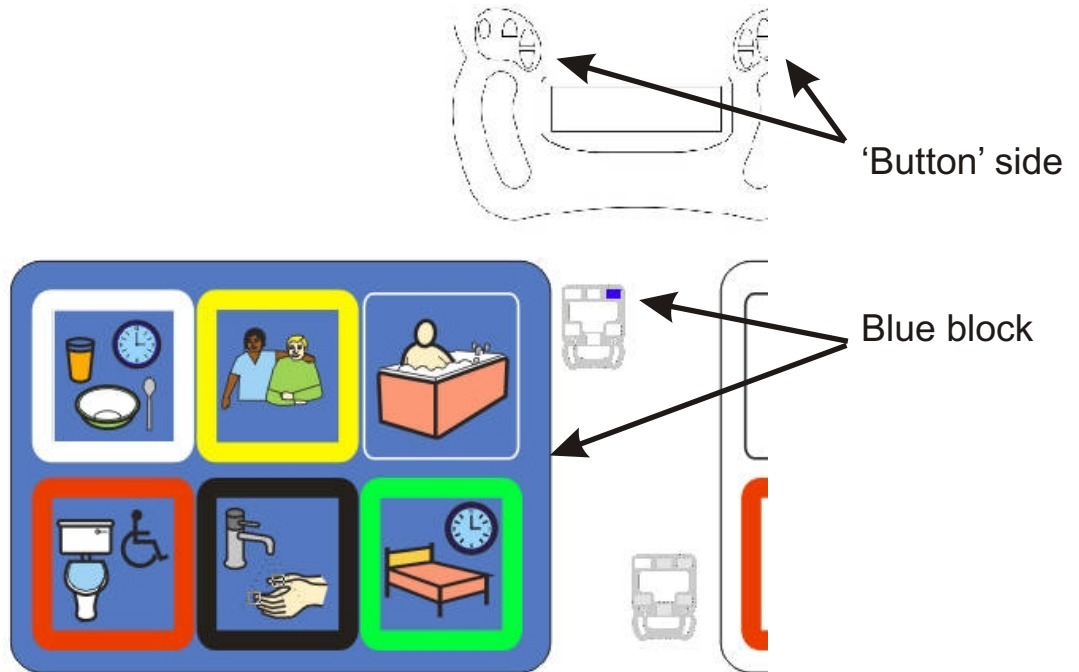
Ensure this is the COM port you recorded when setting up Bluetooth

Press to connect. This screen will disappear and the main display is ready to use.

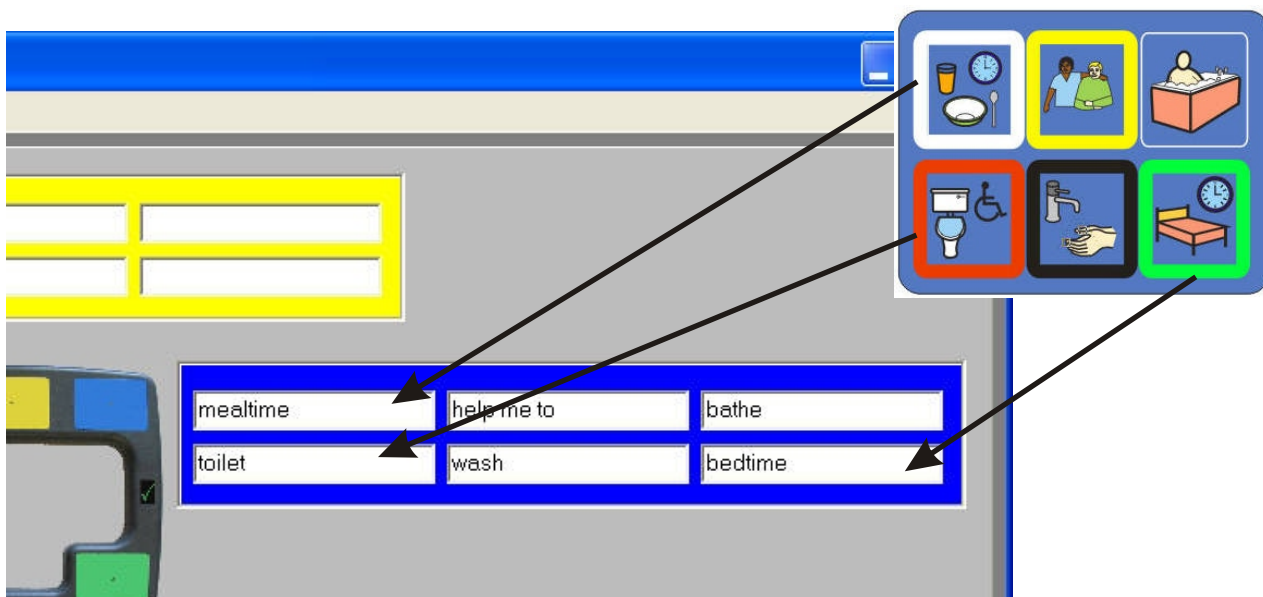
A new set of phrases can now be loaded using the 'Load' option in the file menu. Similarly new vocabularies can be saved for later use, or use in particular situations, or for several people, by using the 'Save' option.



Alternatively, new words can be added directly from the screen. For example, let us assume we have made some labels using the templates (See the Appendix). You will have two sheets of labels; one for either side of **MegaBee**. Referring to *the side with the buttons*, for the blue block we might have:



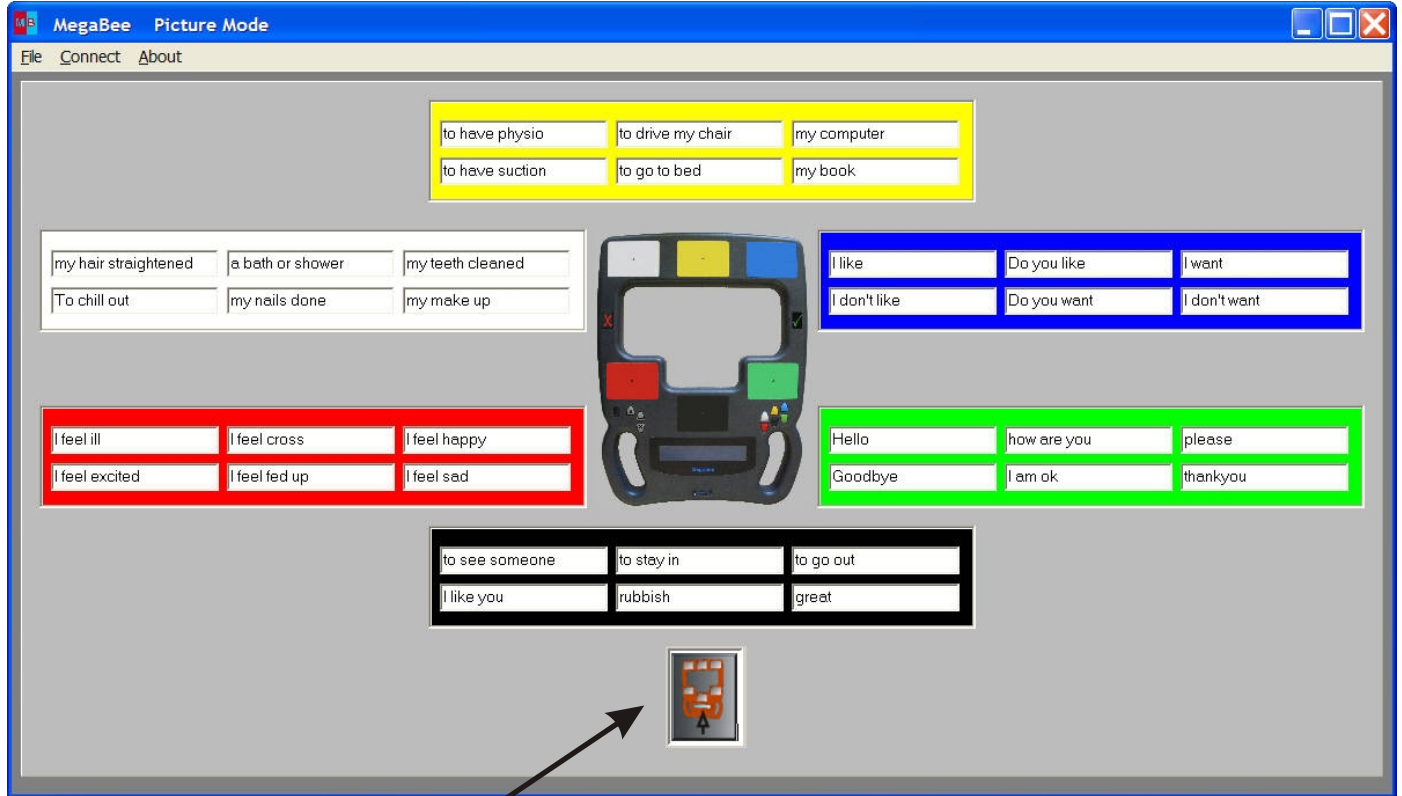
Here we have six symbols for: mealtime, help me to, bathe, toilet, wash, bedtime. What we now need to do is type these phrases into the relevant locations on the computer screen. Each phrase can be up to 20 letters long.



When all the relevant phrases have been typed in then save them from the 'File' menu.

To complete the operation, these phrases need to be transferred to **MegaBee**.

Ensure the 'VOCABULARY' function is ACTIVE on the **MegaBee** unit, and that the Bluetooth link is connected.

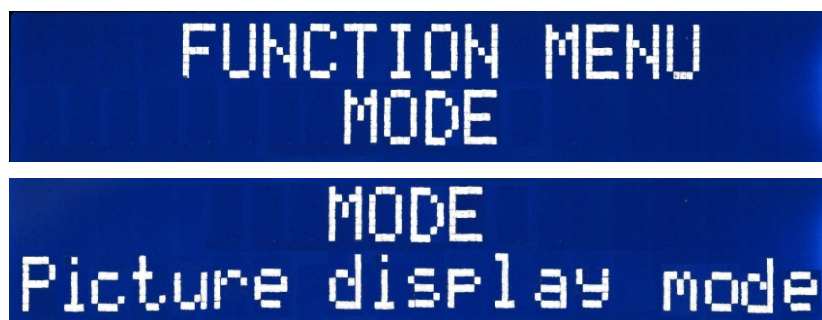


Click on the upload button on the computer screen, and the phrases will be sent over the link.

On the **MegaBee** unit:

The screen will indicate upload in progress and completed.

Ensure that the 'MODE' function is set to 'Picture display mode'.



Press the function button to exit.

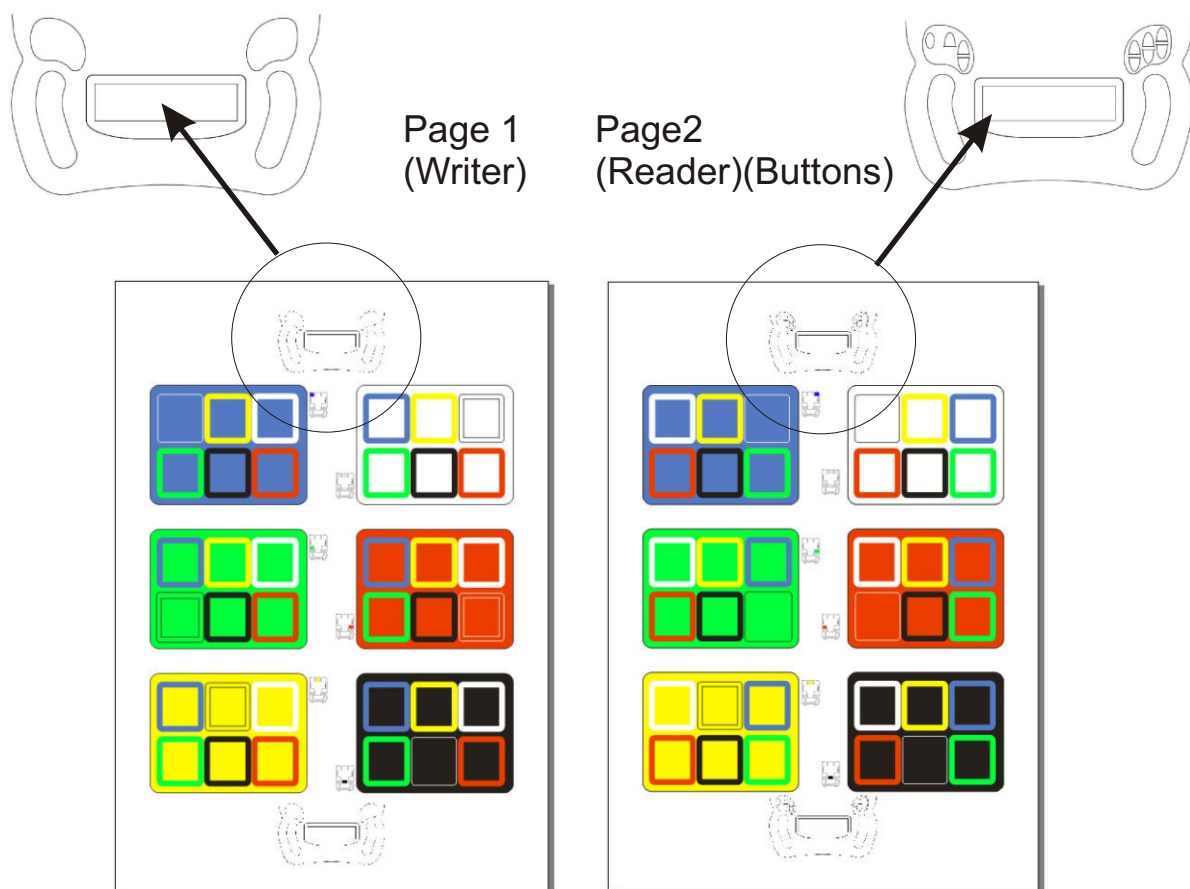
Appendix 1 - Printing labels

To use the PICTURES facility you must prepare and print off your own self-adhesive labels. To achieve this packs of pre-cut labels are available from your supplier which allow accurate printing and easy use. They come in pack of ten pre-cut sheets suitable for printing on (Part Number PN-369-036)

Any symbols, pictures, cartoons, or drawings can be used. A good source of symbols which have an open source license (you can use them for free) is <http://straight-street.com/help.php>.

The layout of the pictures is assisted by using templates available on your CD. These are provided for various commercially available programs such as Microsoft Word, CorelDRAW, OpenOffice.org Draw, etc. Examples are given for each program in this appendix.

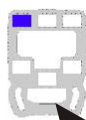
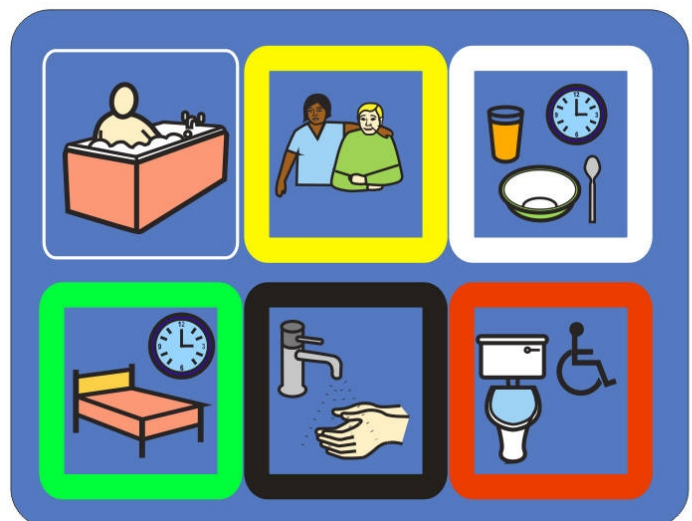
Each time you make a set of labels, two pages have to be printed; one for the reader (button side), one for the writer. These two pages are different. The templates are clearly marked as to which side you are working on by outline drawings of the **MegaBee**:



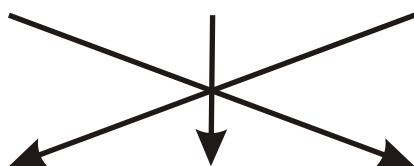
Appendix 1 - Printing labels (...)

Strict placement of the pictures has to be observed. This is not as complicated as it may sound and is easily illustrated.

Using the Blue block for example. On Page 1 (Writer side) we could fill out the block like this:



We know this is the writer's side because the small icon has no buttons and the blue block is in the top left hand corner.



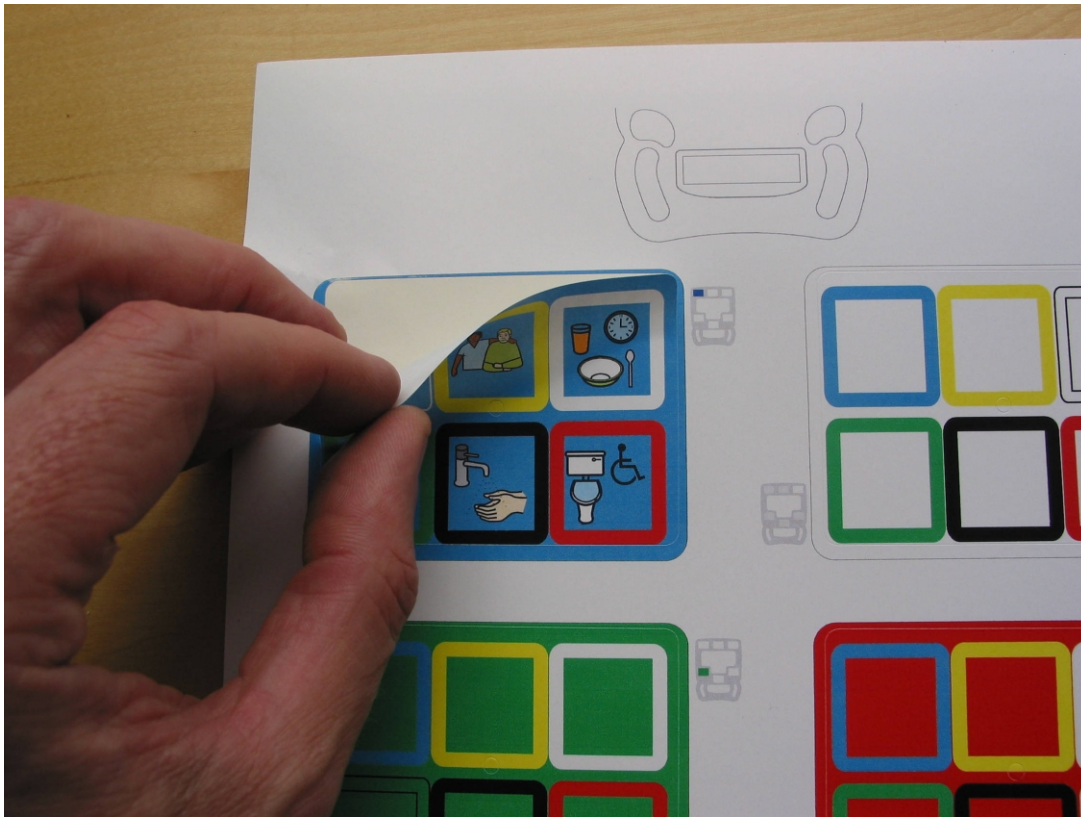
On Page 2 (Reader side) we need to insert the same images, but in reverse order on the rows

We know this is the reader's side because the small icon has buttons and the blue block is in the top right hand corner.

Once both sheets are complete they can be printed off on any reasonable quality colour printer.

Appendix 1 - Printing labels (...)

When you have printed your labels, peel them off and place them over the corresponding text label.



Ensure that both the colour of the block, and the colour of the smaller frames on the label correspond to the existing label and colour of the letters on [MegaBee](#).



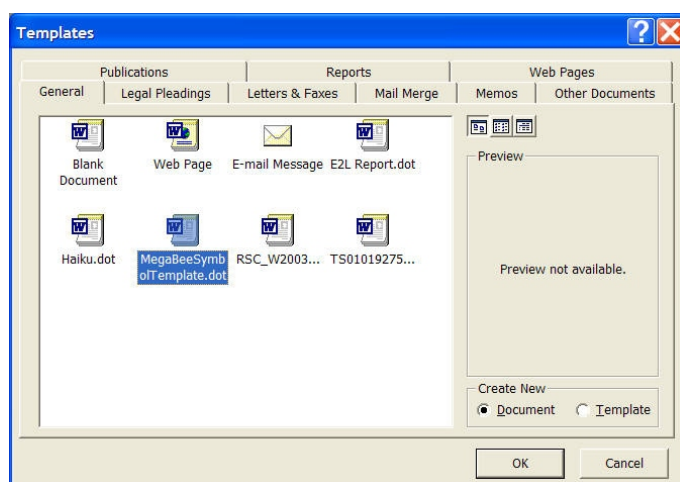
Appendix 2 - Microsoft word template

Various templates are provided for preparing your labels. This section is for people who use Microsoft Word.

A template is provided on the **MegaBee** CD called MegaBeeSymbolTemplate.dot. If you open this file and then 'Save As' a template then Word will then include it in its list of templates.

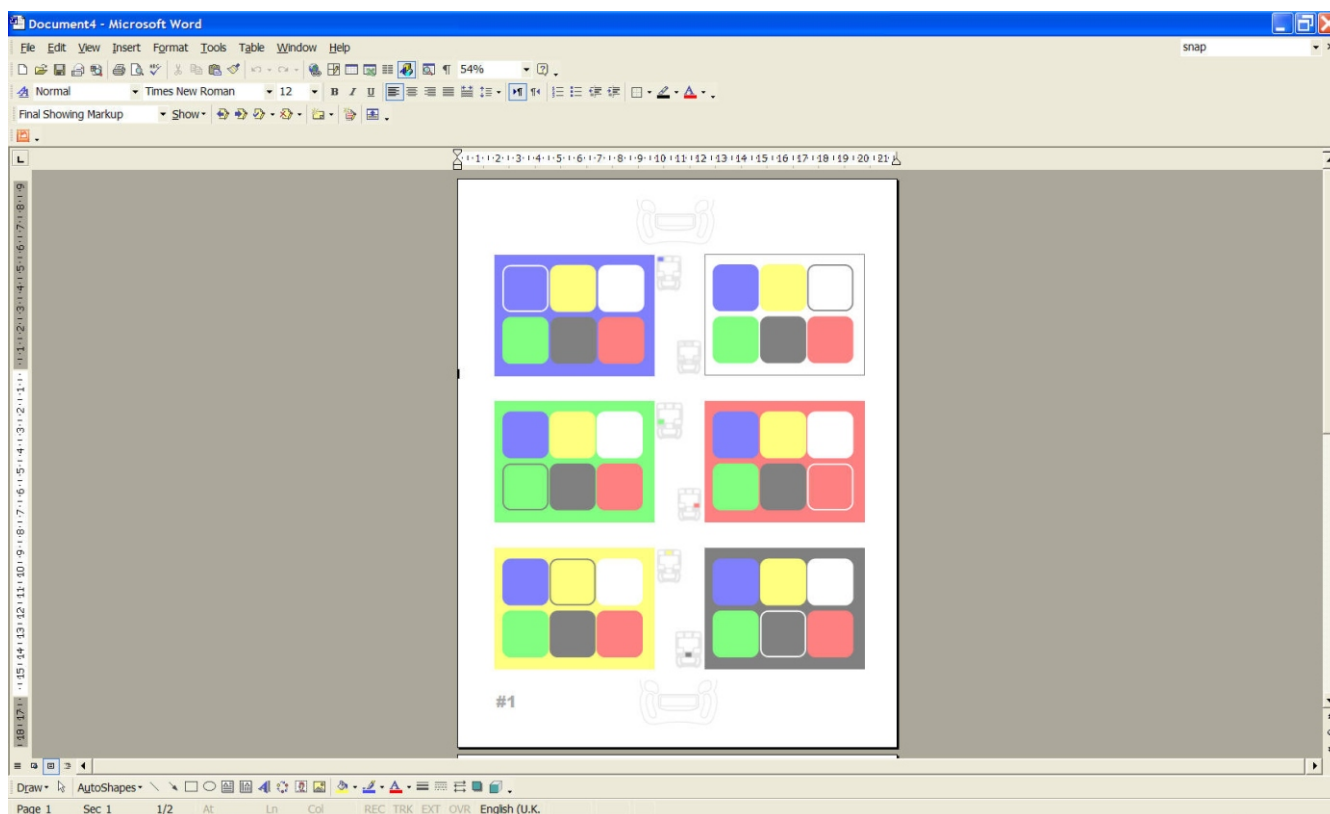
To produce your labels in Word:

From the File Menu choose 'New', then select 'General Templates' from beneath the 'New From Template' list on the right hand side of your screen. The Template pop-up will appear.



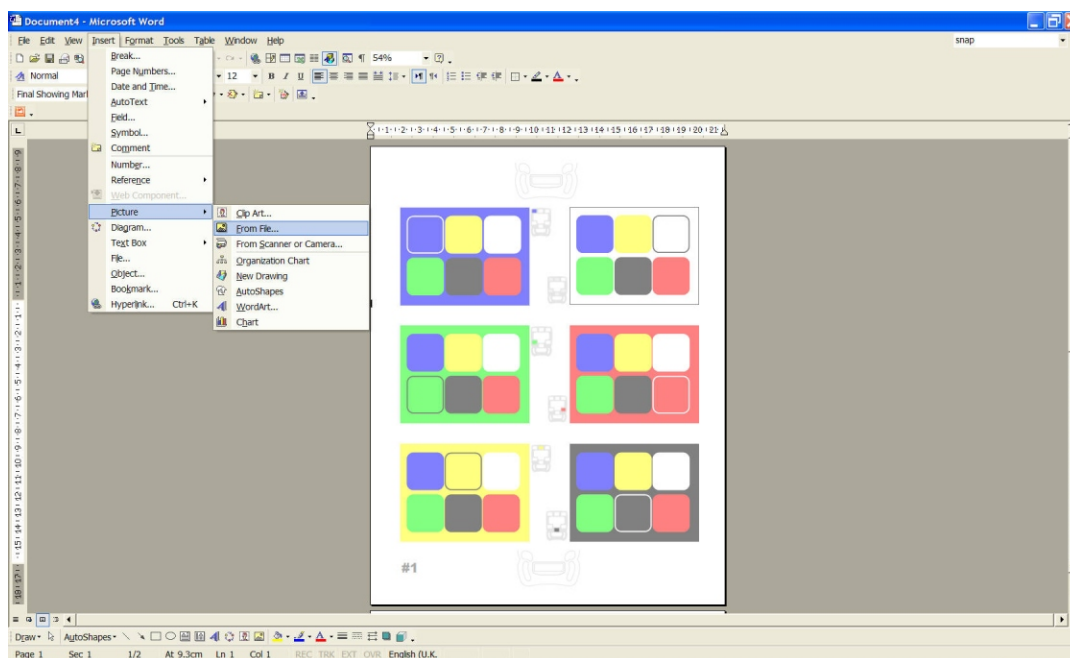
Select MegaBeeSymbolTemplate.dot and press OK.

A two page document will be presented with dull blank labels:

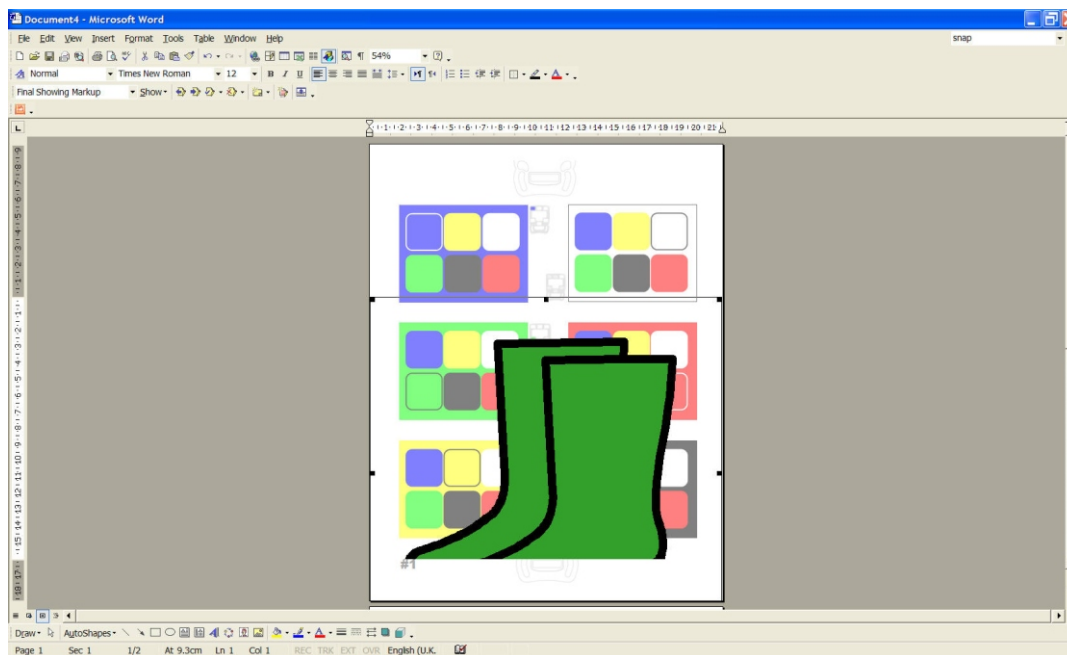


Appendix 2 - Microsoft word template (...)

To add pictures or symbols go to the Insert menu and select 'Picture'. Then select your source of pictures - usually 'From File' or 'Clip Art'.

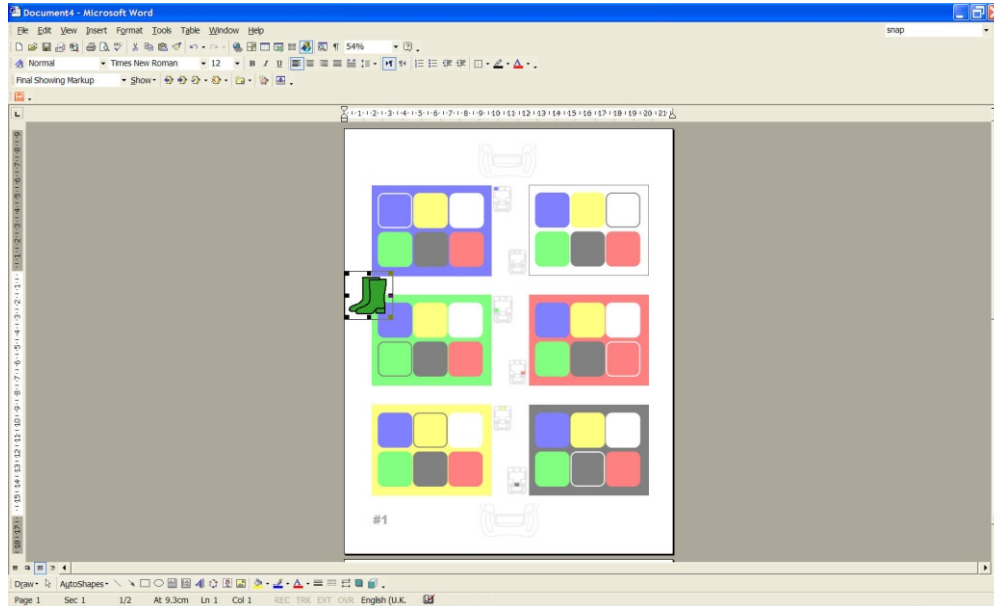


In this example we will use a pair of boots. The selected image will appear on top of the labels:

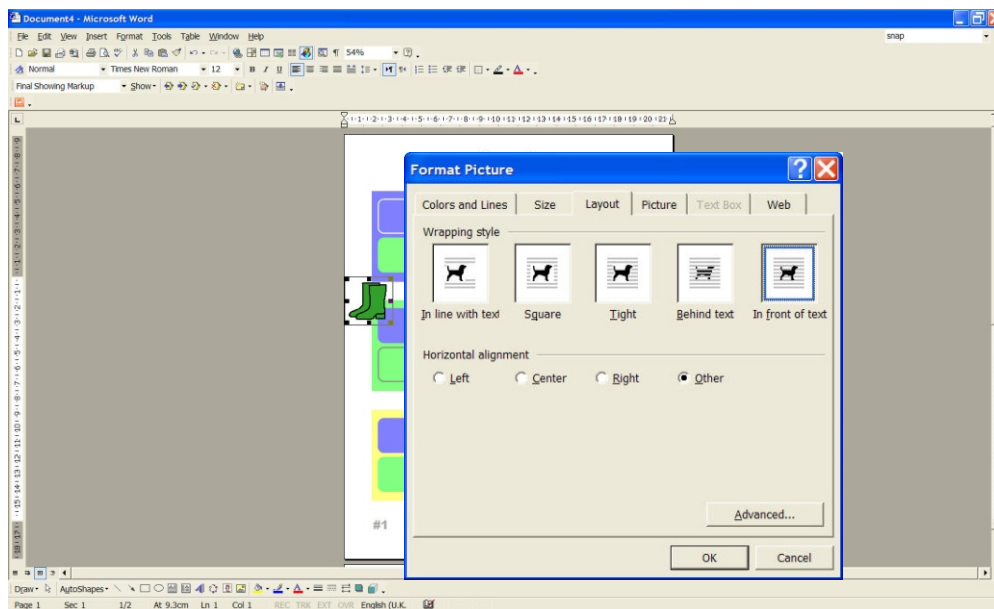


Appendix 2 - Microsoft word template (...)

Obviously this image is too large so we need to resize it by pointing to one of the black squares in the corner of the image, press and hold the left mouse button, and dragging the corner so that we have a smaller image.



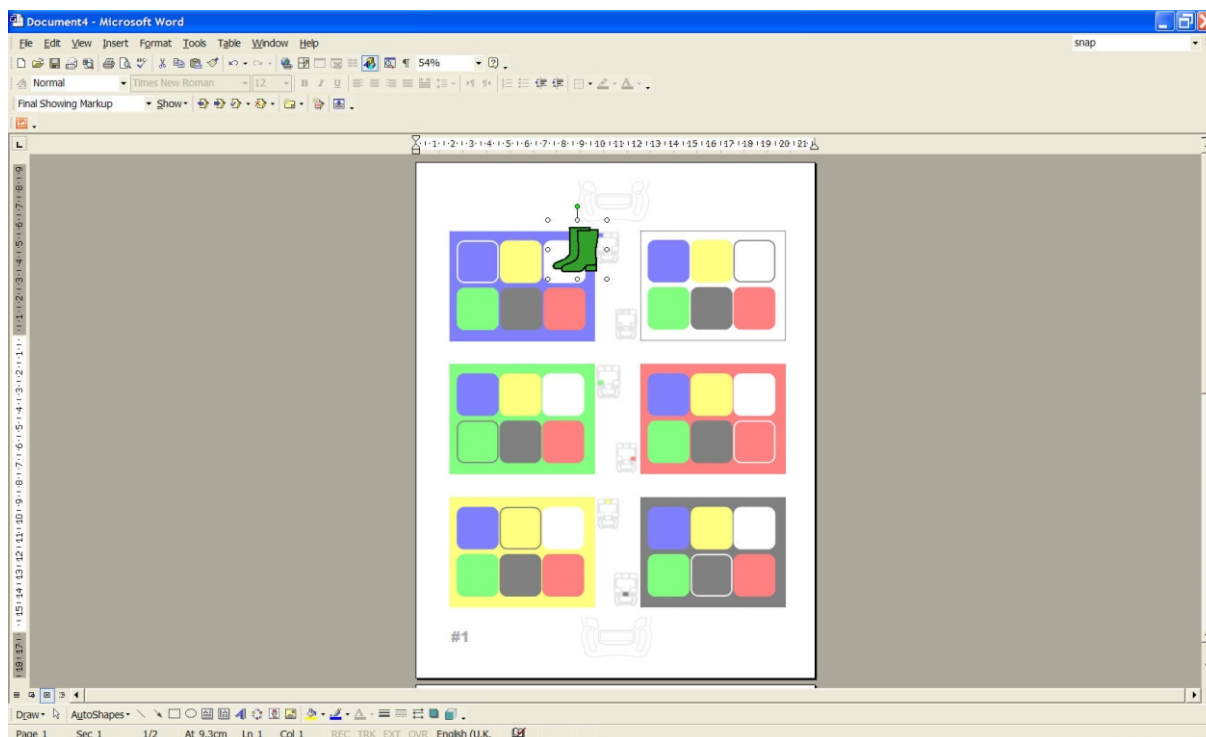
Now right click on the image and select 'Properties', and then select the 'Layout' tab.



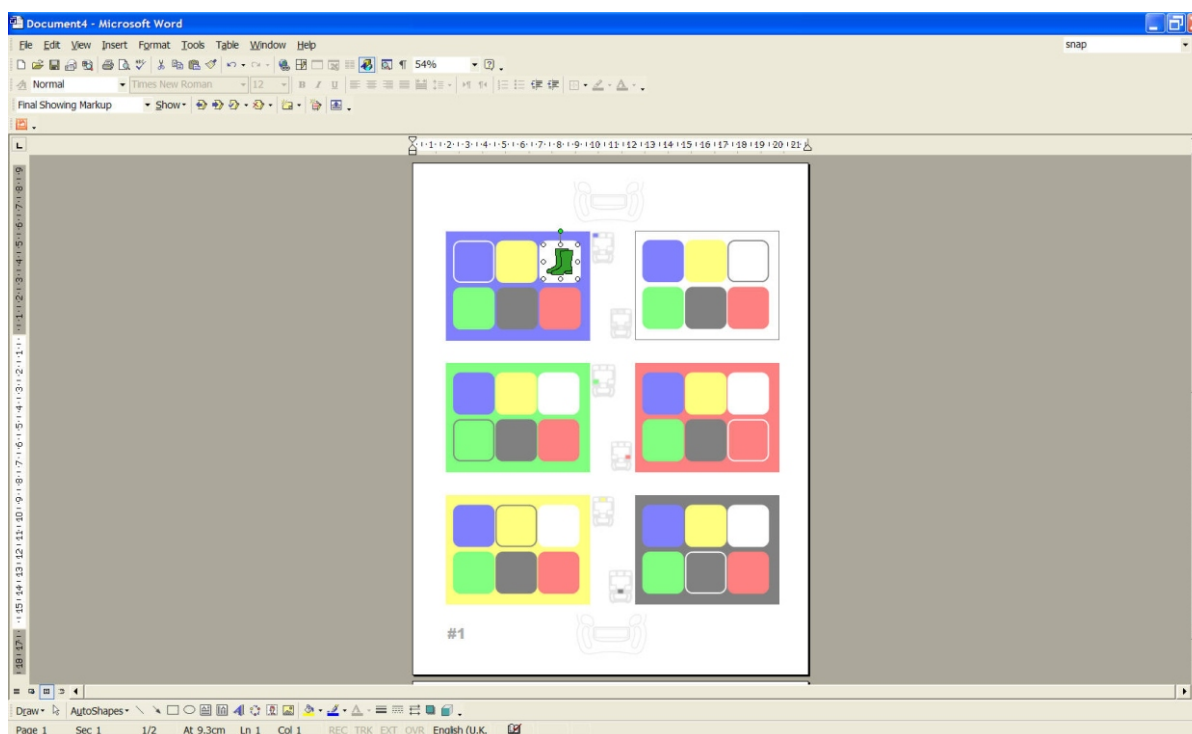
Select 'In Front of Text' and click OK.

Appendix 2 - Microsoft word template (...)

Now the image can be dragged and dropped (click and hold on the image and drag it with the mouse) to your chosen label location.

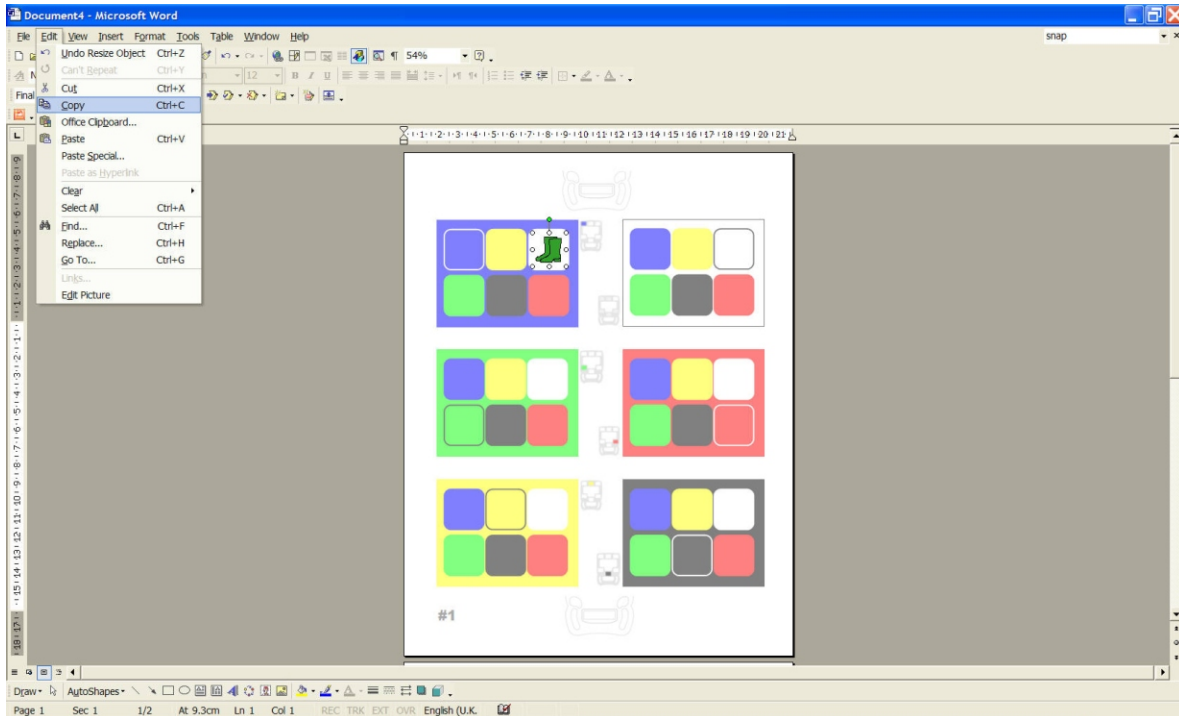


The image can be resized using the corner guides, and finally positioned into place (in this example, the white square in the blue block).

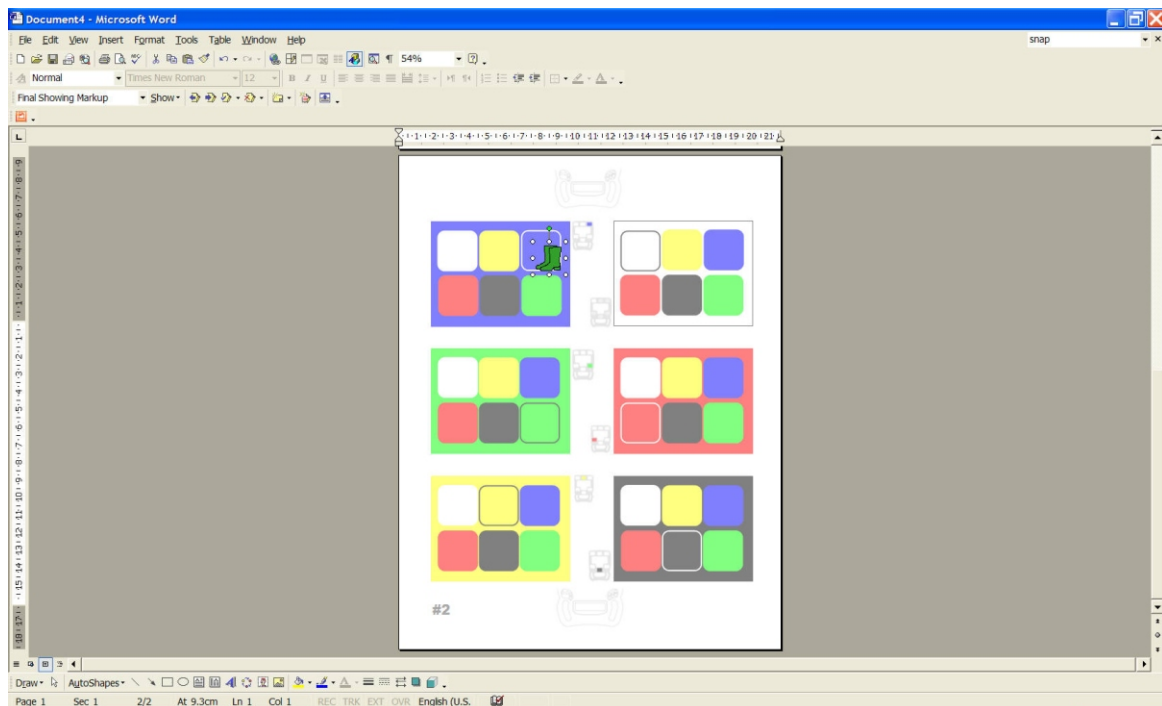


Appendix 2 - Microsoft word template (...)

We now have to copy the image to the corresponding position on page #2. In this example the white square in the blue block. To do this, select the image (click on it with the mouse) then go to the 'Edit' Menu and select 'Copy' (Shortcut is Control-C)

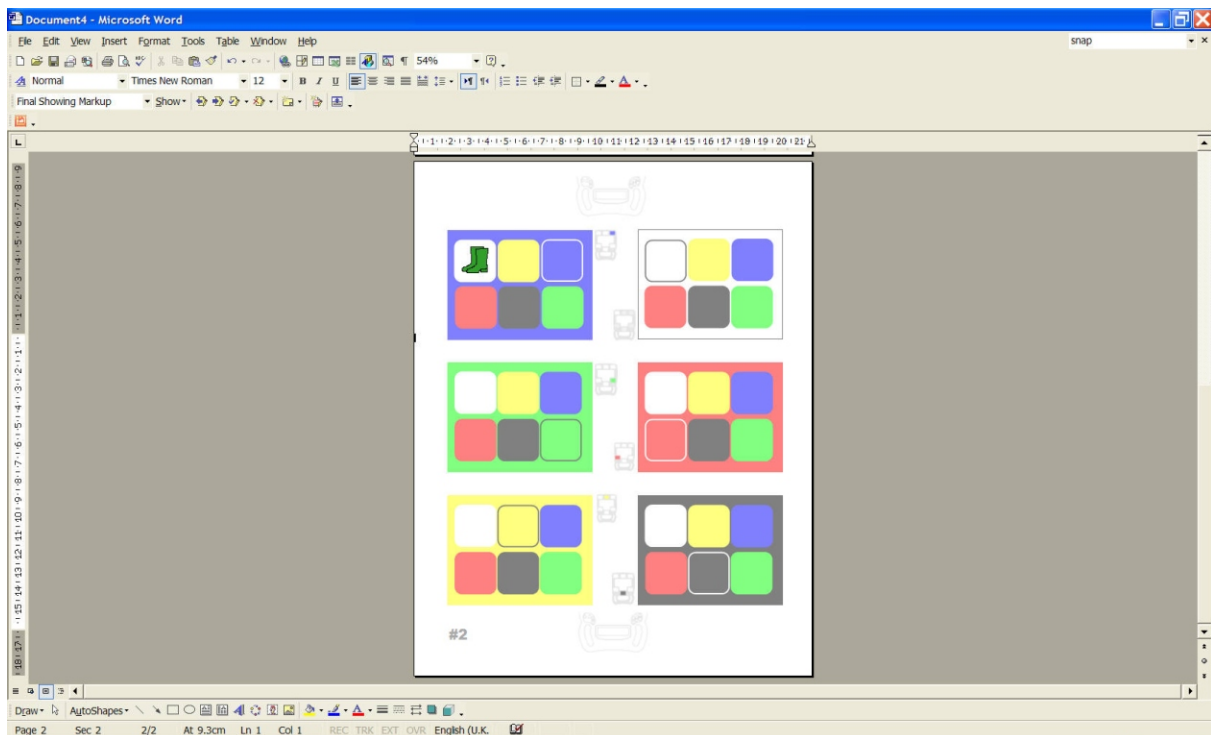


Scroll down to page 2 and paste the image from the 'Edit' menu (Shortcut is Control-V)

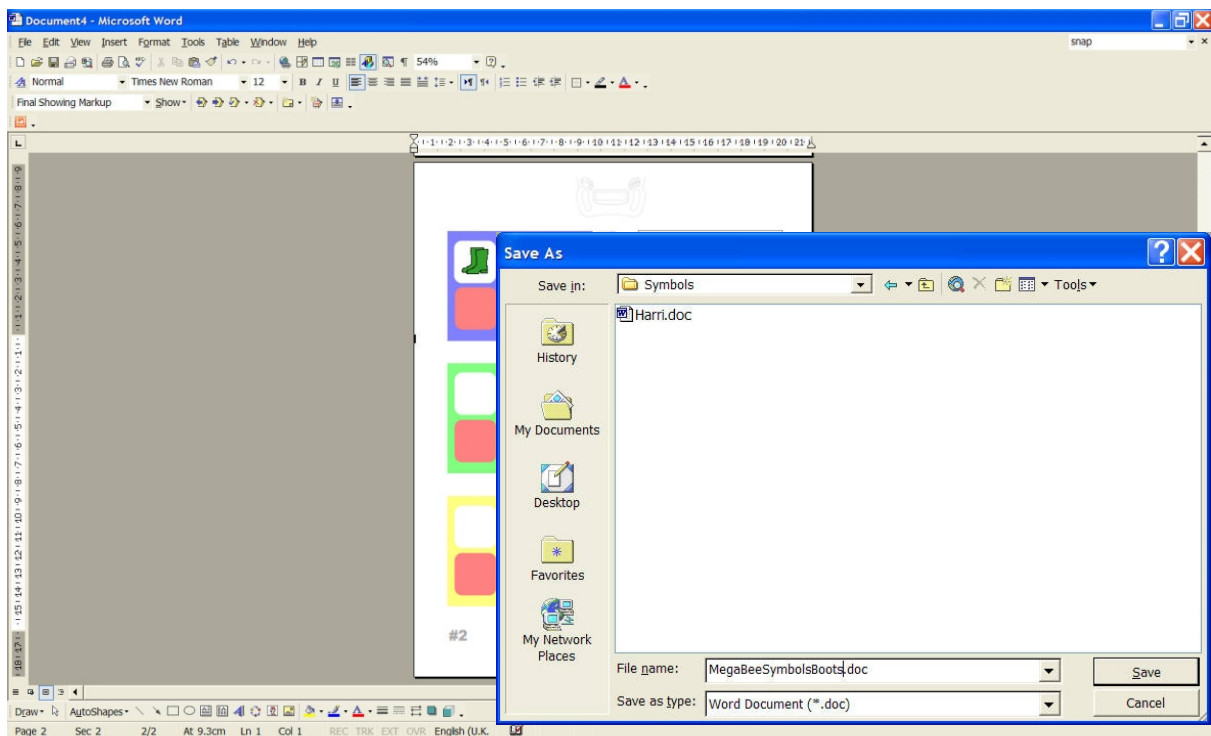


Appendix 2 - Microsoft word template (...)

Drag and drop the image into the white square in the blue block:



Repeat this process for all your pictures, and then save as a document:



Printing this document will produce two sheets of self adhesive labels. The meaning of the symbols should be transferred to **MegaBee** as detailed in the 'Pictures' section earlier in this manual.

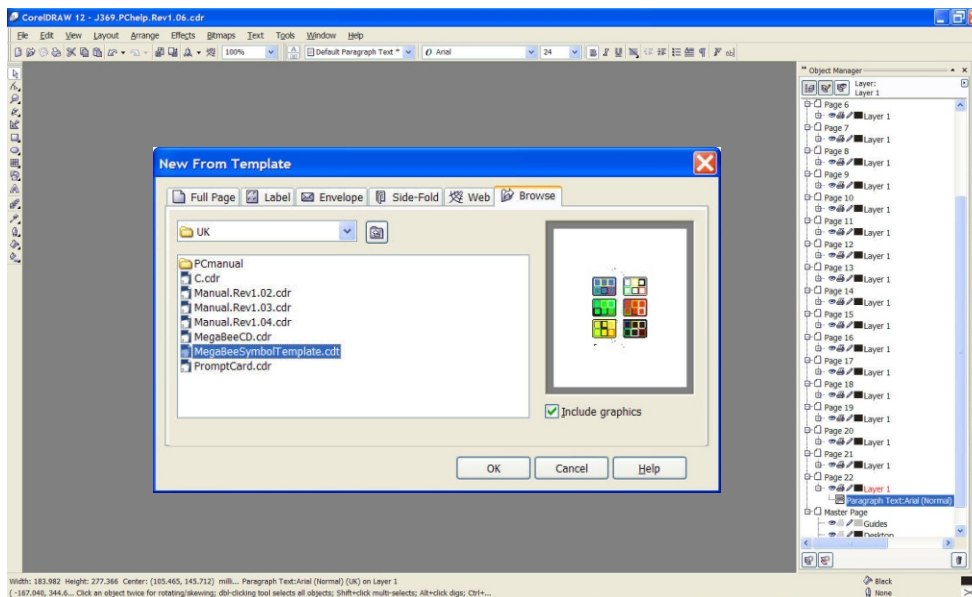
Appendix 3 - CorelDRAW template

Various templates are provided for preparing your labels. This section is for people who use CorelDRAW Graphics Suite.

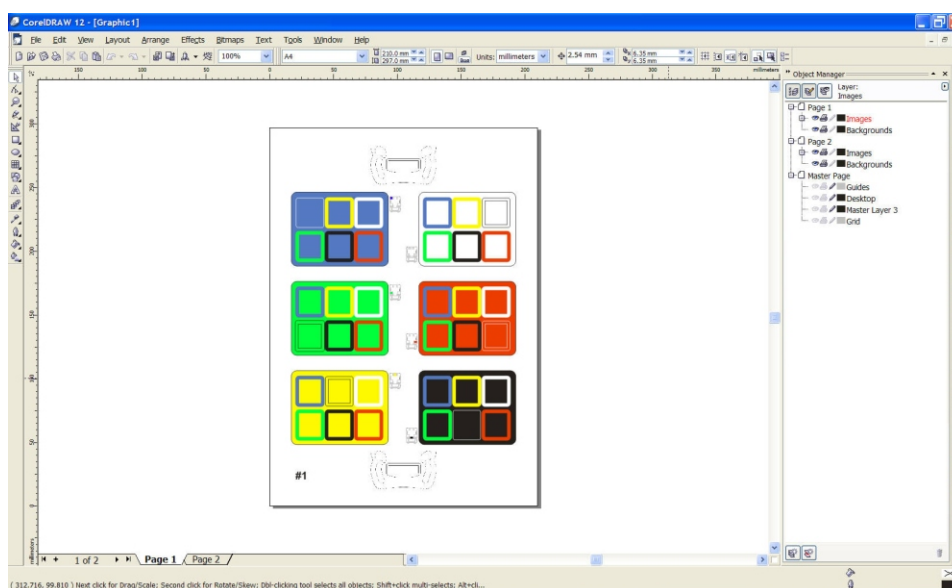
A template is provided on the **MegaBee** CD called MegaBeeSymbolTemplate.cdt.

To produce your labels in CorelDRAW:

From the File Menu choose 'New from Template', then select the 'Browse' Tab, locate and select the file MegaBeeSymbolTemplate.cdt and click OK.

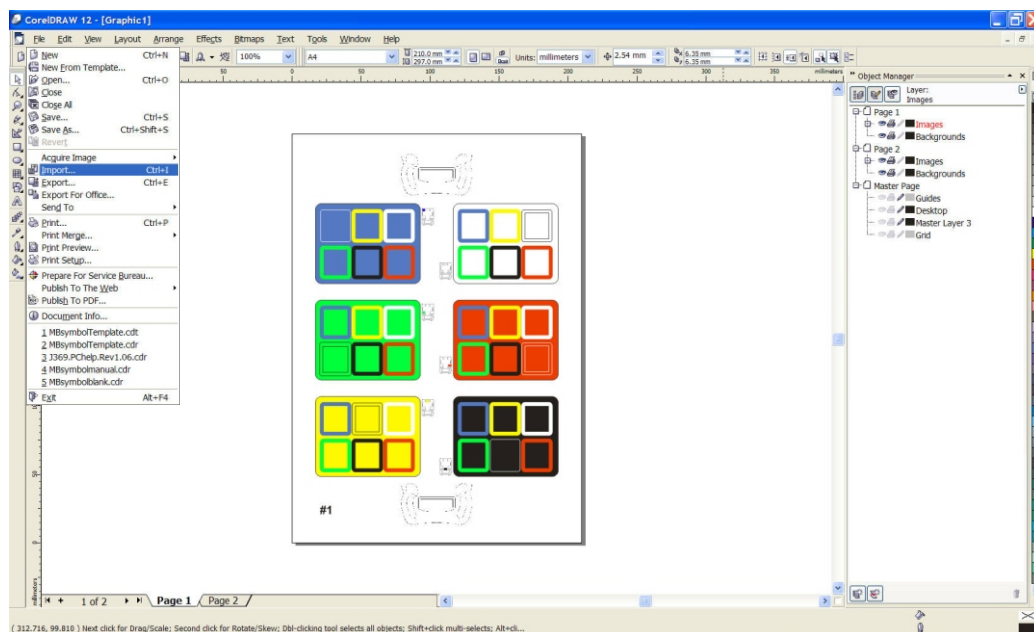


A two page document will be presented with blank labels:

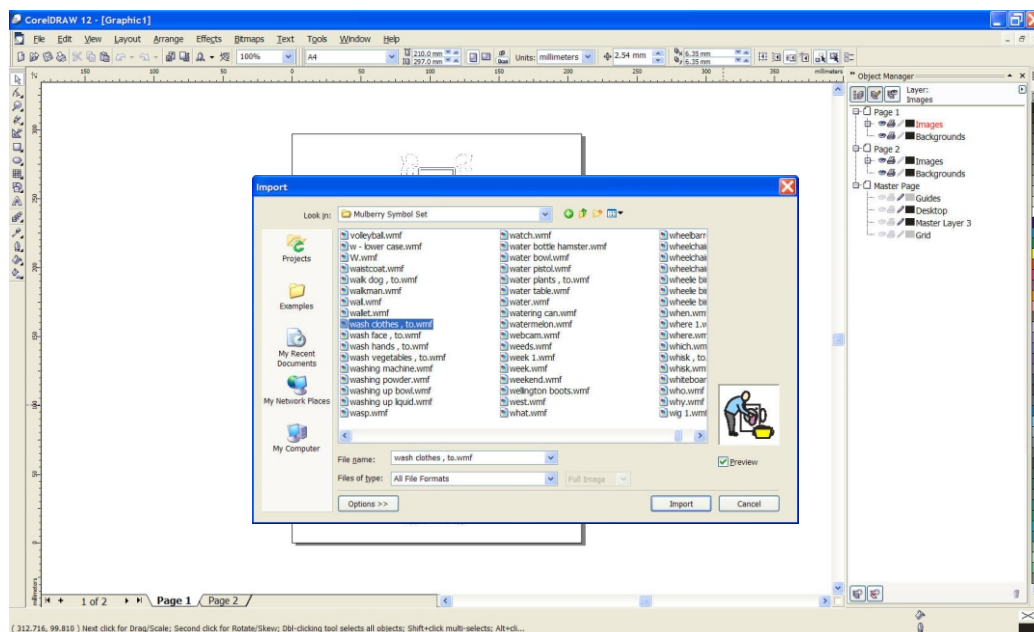


Appendix 3 - CorelDRAW template (...)

To add pictures or symbols go to the File menu and select 'Import'.

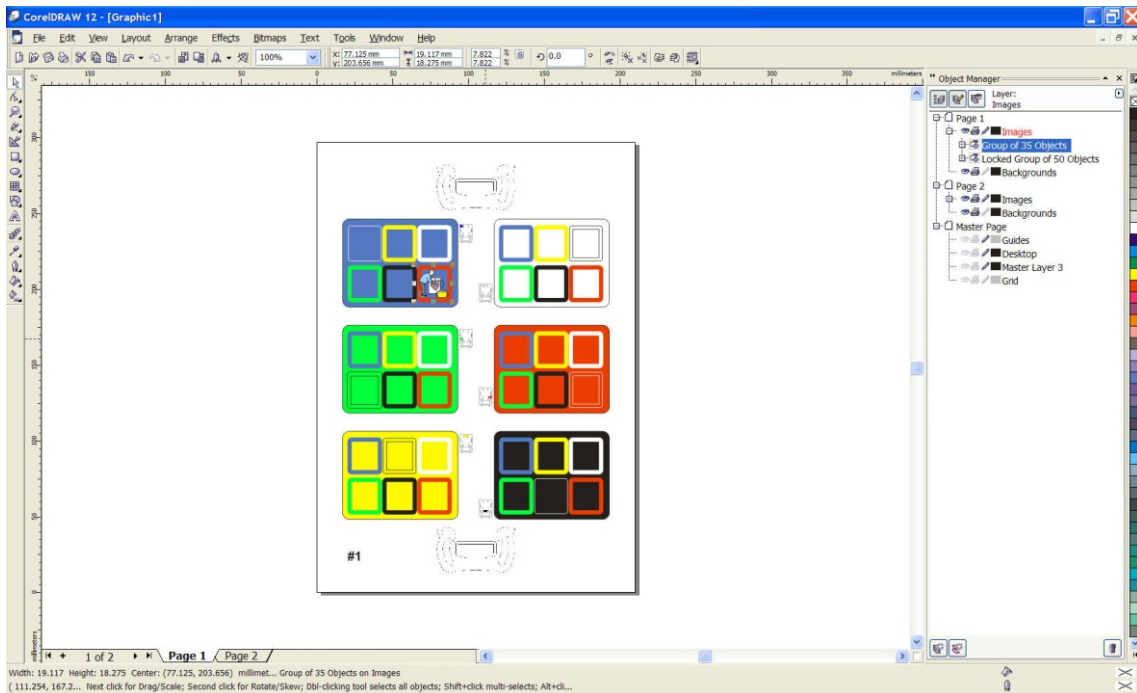


In this example we will use a symbol for washing clothes.

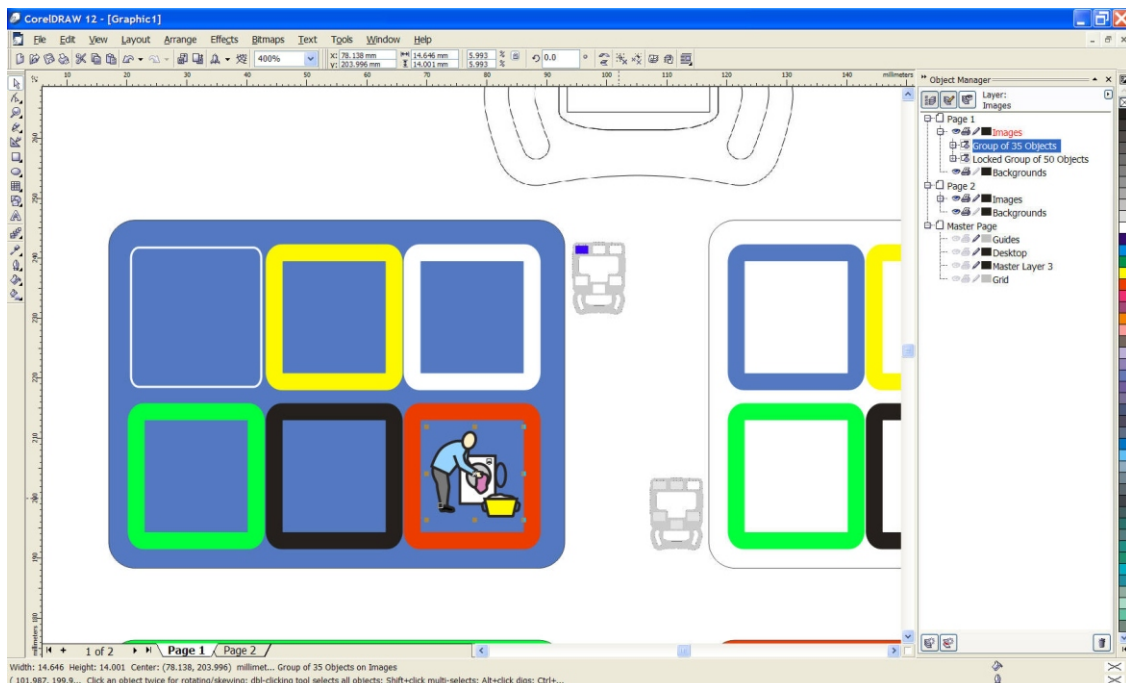


Appendix 3 - CorelDRAW template (...)

Place the picture in the required frame using the 'click and drag' facility. In this example we will put the symbol in the red square on the blue block.

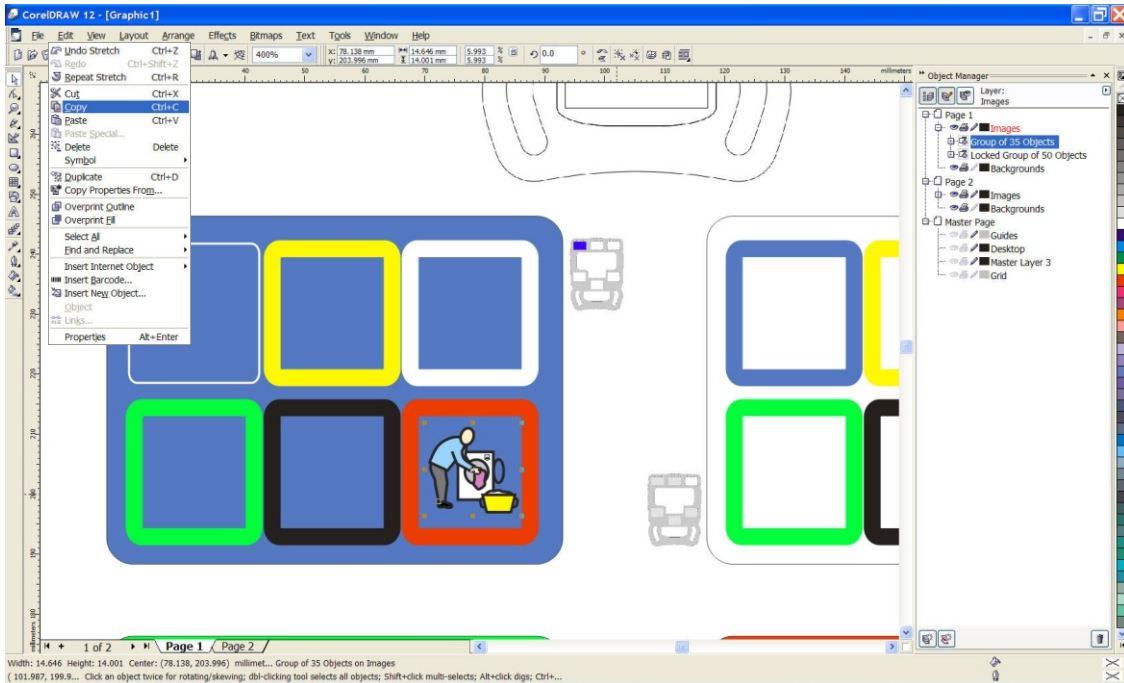


The symbol can be adjusted in size and position using the corner markers:

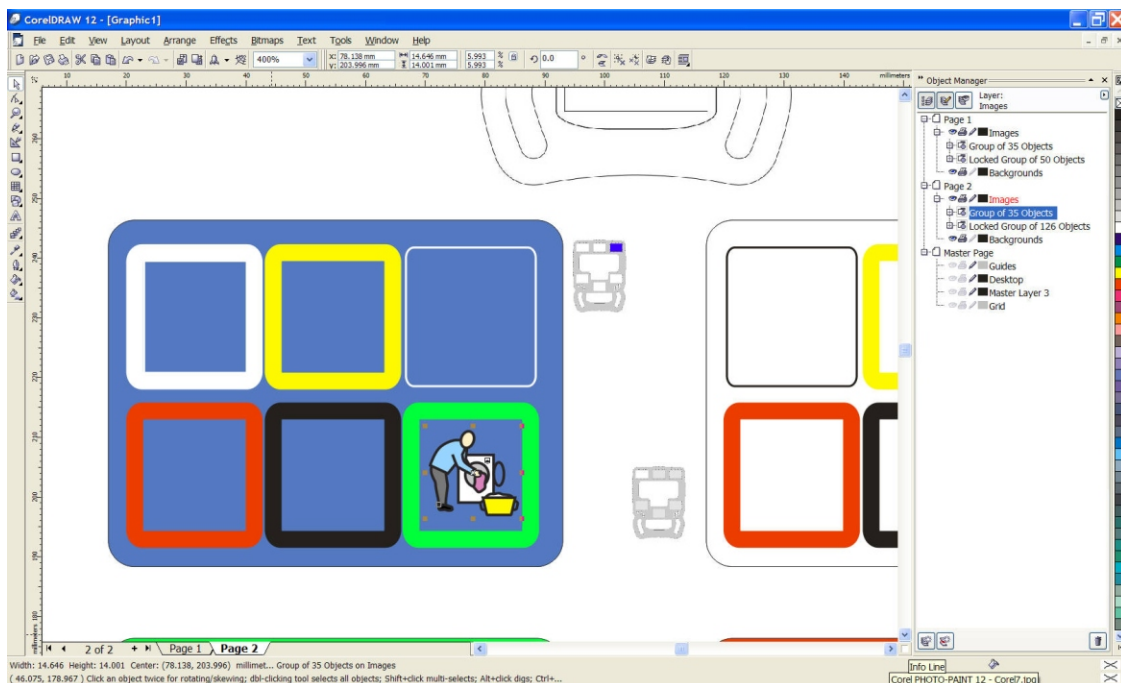


Appendix 3 - CorelDRAW template (...)

We now have to copy the image to the corresponding position on page #2. In this example the red square in the blue block. To do this, select the image (click on it with the mouse) then go to the 'Edit' Menu and select 'Copy' (Shortcut is Control-C)



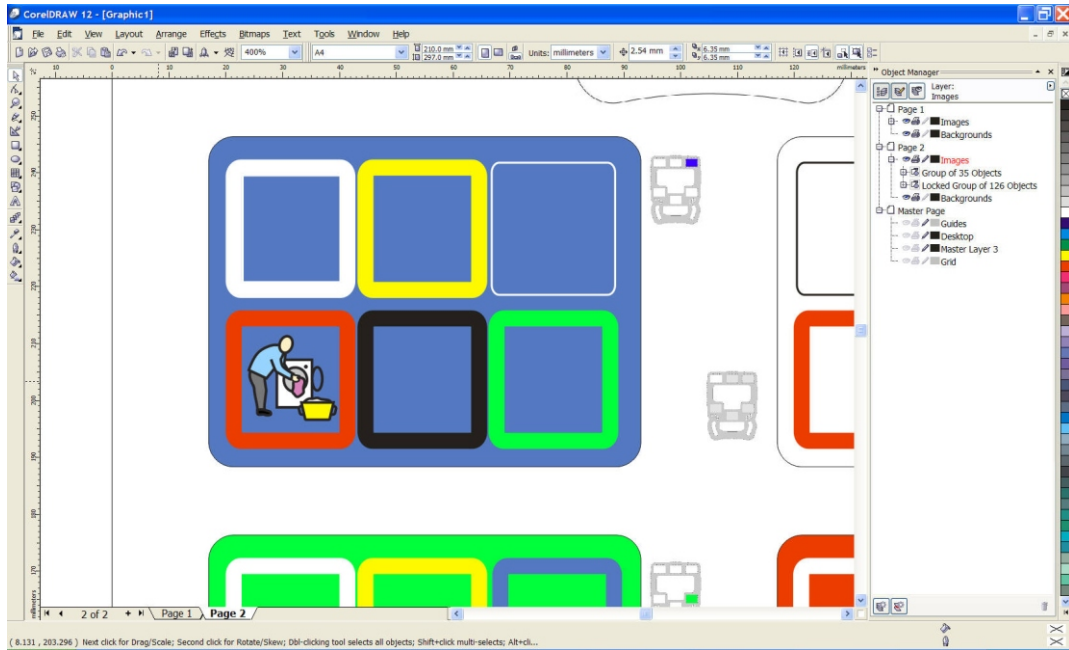
Select Page 2 and paste the image from the 'Edit' menu (Shortcut is Control-V)



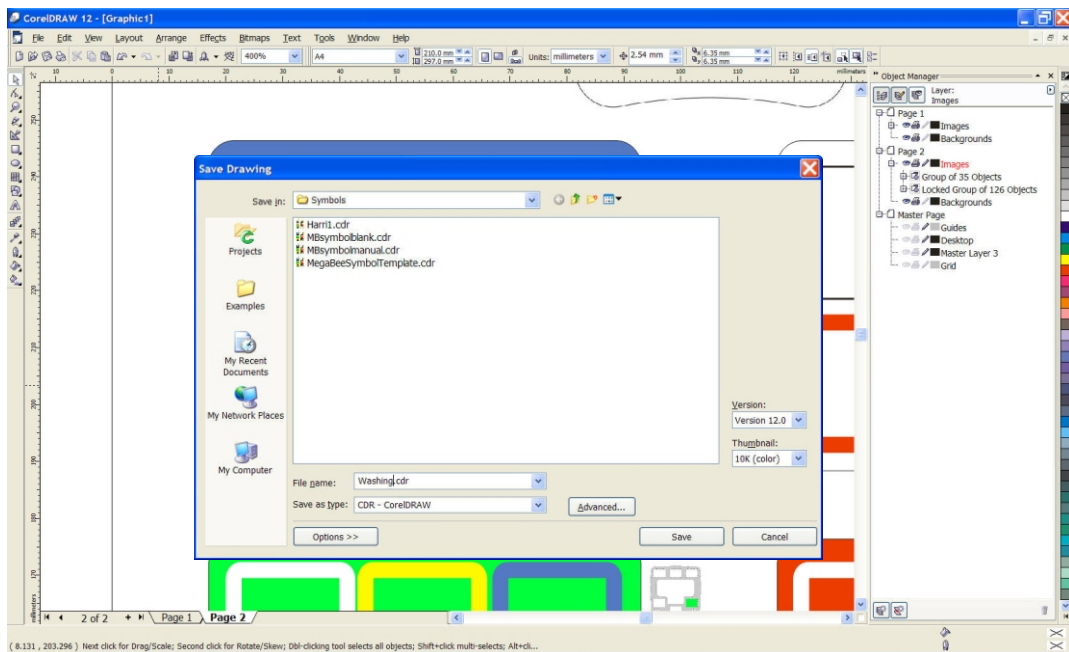
We now need to move the image to the red square in the blue block.

Appendix 3 - CorelDRAW template (...)

Drag and drop the image into the red square in the blue block:



Repeat this process for all your pictures, and then save as a document:



Printing this document will produce two sheets of self adhesive labels. The meaning of the symbols should be transferred to **MegaBee** as detailed in the 'Pictures' section earlier in this manual.

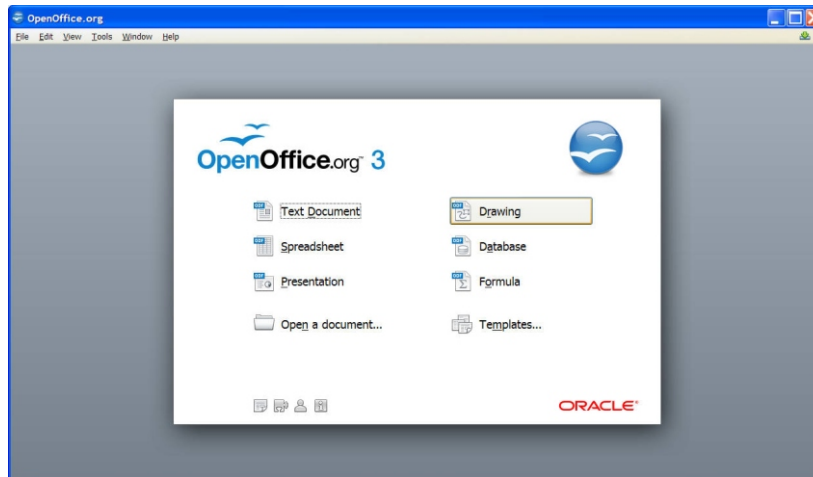
Appendix 4 - OpenOffice.org Draw template

Various templates are provided for preparing your labels. This section is for people who use OpenOffice.org program suite and utilises the Draw program.

A template is provided on the **MegaBee** CD called MegaBeeSymbolTemplate.otg.

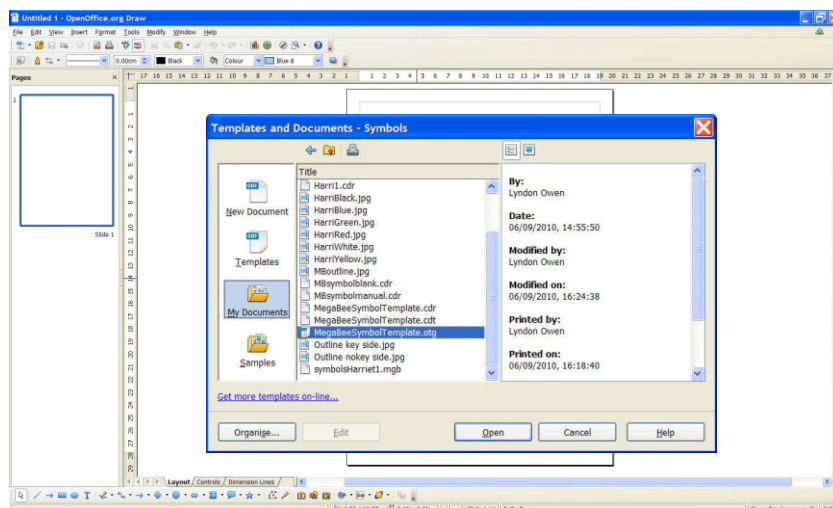
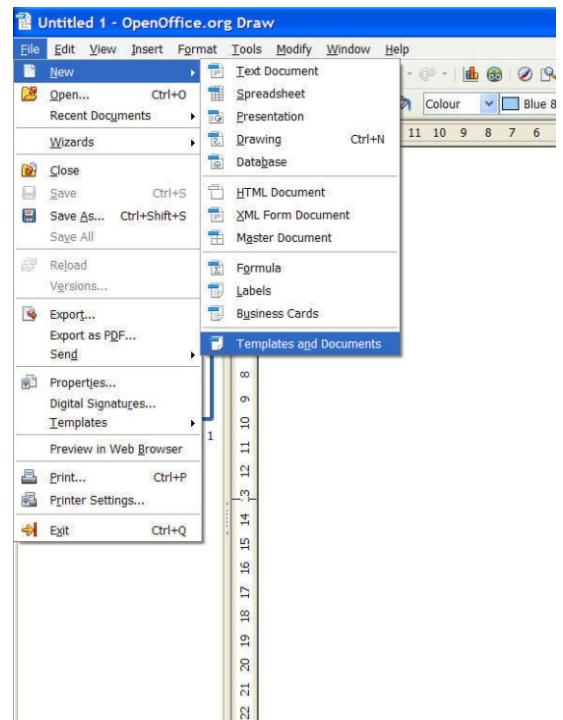
To produce your labels in OpenOffice.org:

Select the Drawing Feature from the opening screen.



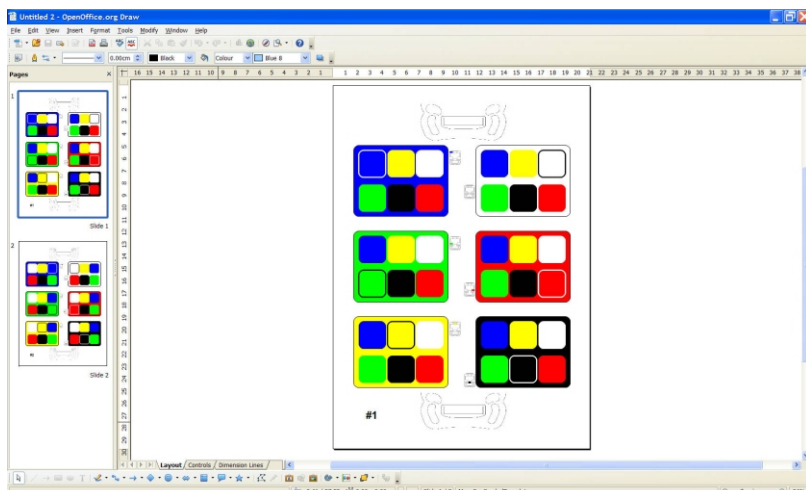
From the File Menu choose 'New', then 'Templates and Documents'.

Locate and select the file MegaBeeSymbolTemplate.otg and click OK.

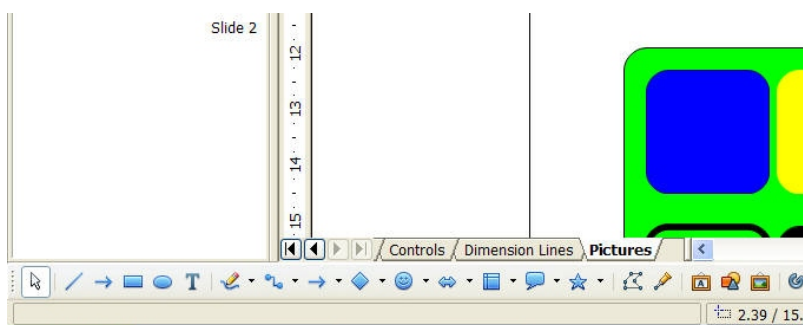


Appendix 4 - OpenOffice.org Draw (...)

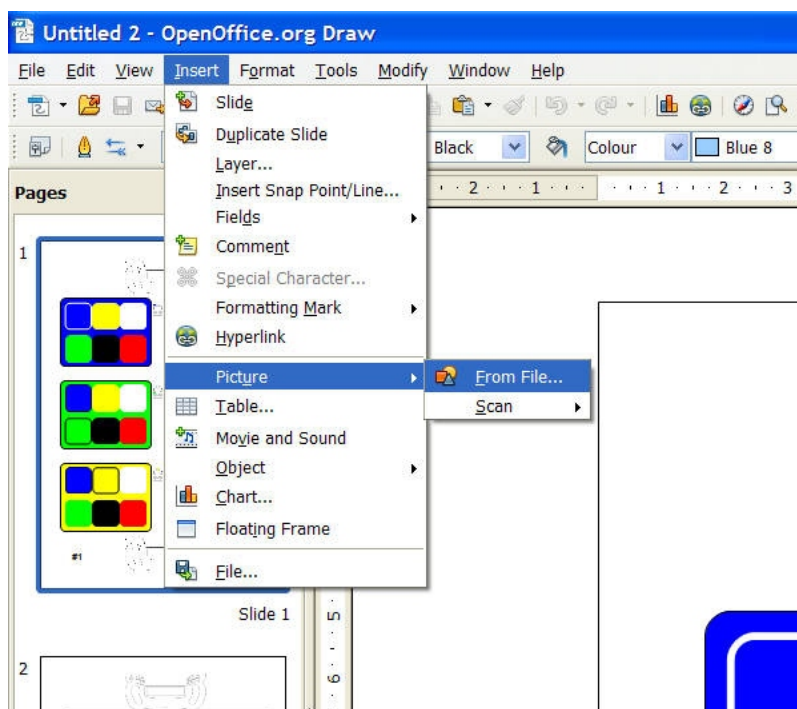
A two slide document will be presented with blank labels:



Make sure the 'Pictures' tab is selected. (If it is not then no alterations will be possible)

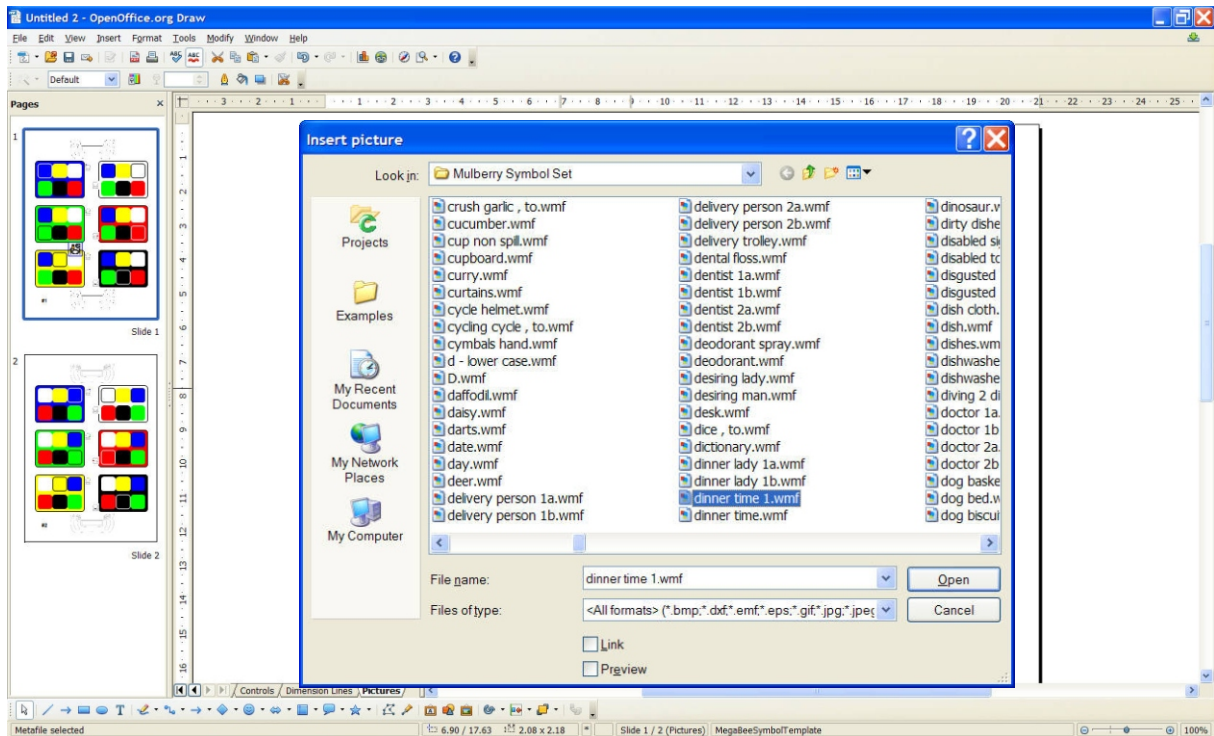


To add pictures or symbols go to the Insert menu and select 'Picture', and then 'From File'.

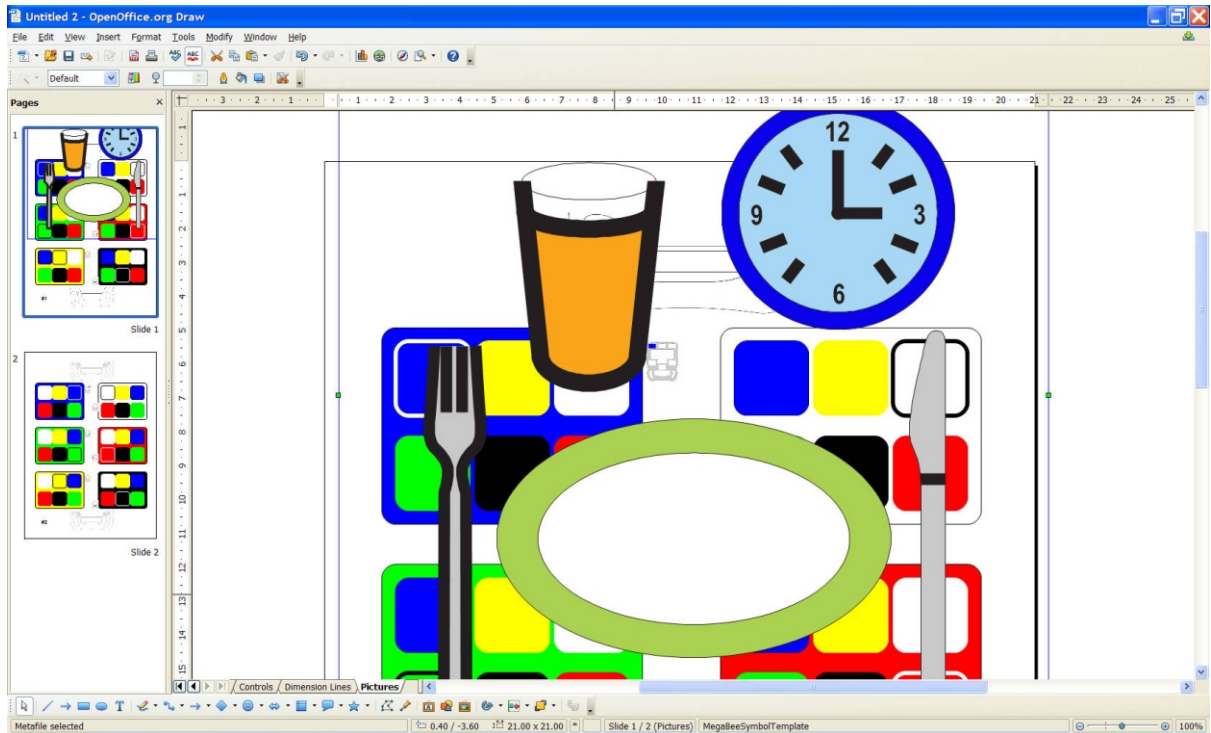


Appendix 4 - OpenOffice.org Draw (...)

Select the required pictures from the pop-up screen and press OK. In this example we will use a symbol for 'dinner time'.



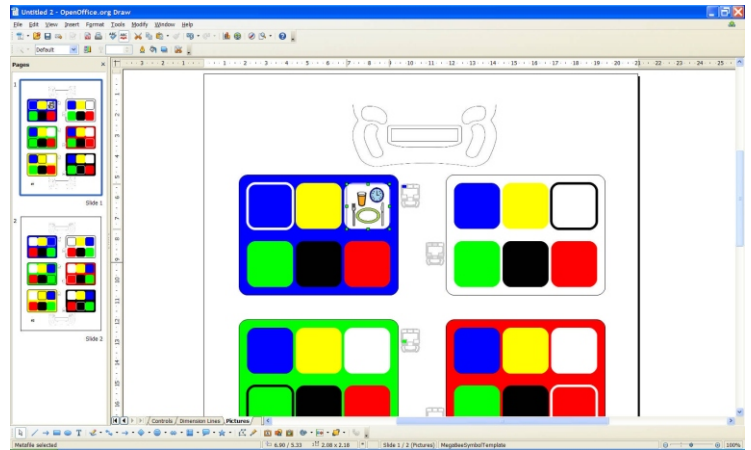
The selected image will appear on top of the labels.



Appendix 4 - OpenOffice.org Draw (...)

Resize the image by dragging the corner guides and position it in the required location. In this example we are using the white square in the blue block.

We now have to copy the image to the corresponding position on slide #2. In this example the white square in the blue block.

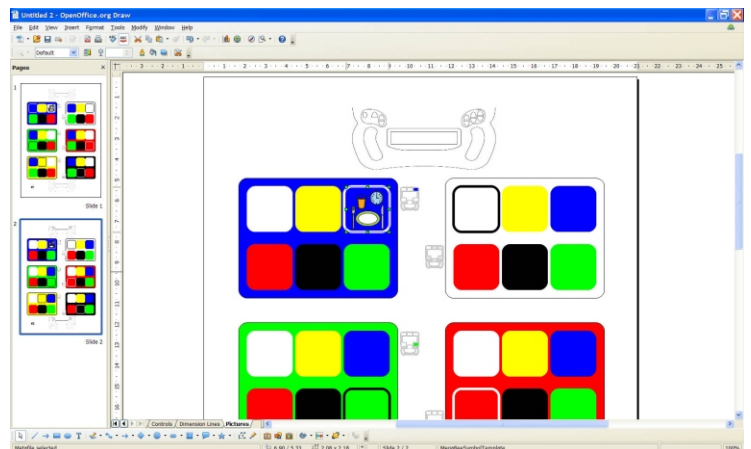


To do this, select the image (click on it with the mouse) then go to the 'Edit' Menu and select 'Copy' (Shortcut is Control-C).

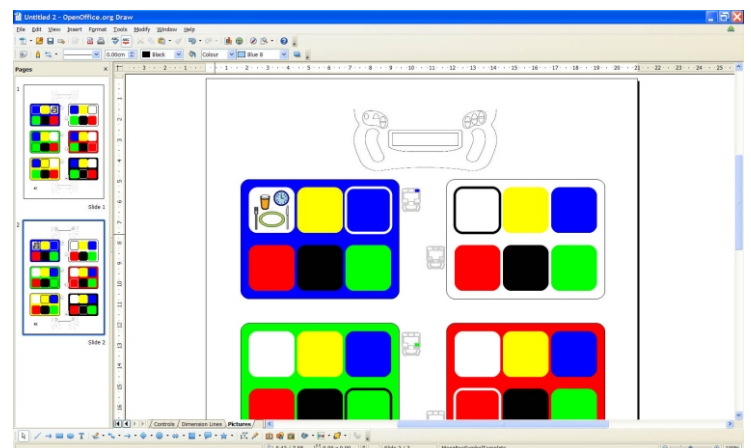
Now click on slide 2, in the pages bar on the left hand side of the screen.



Paste the image from the 'Edit' menu (Shortcut is Control-V).

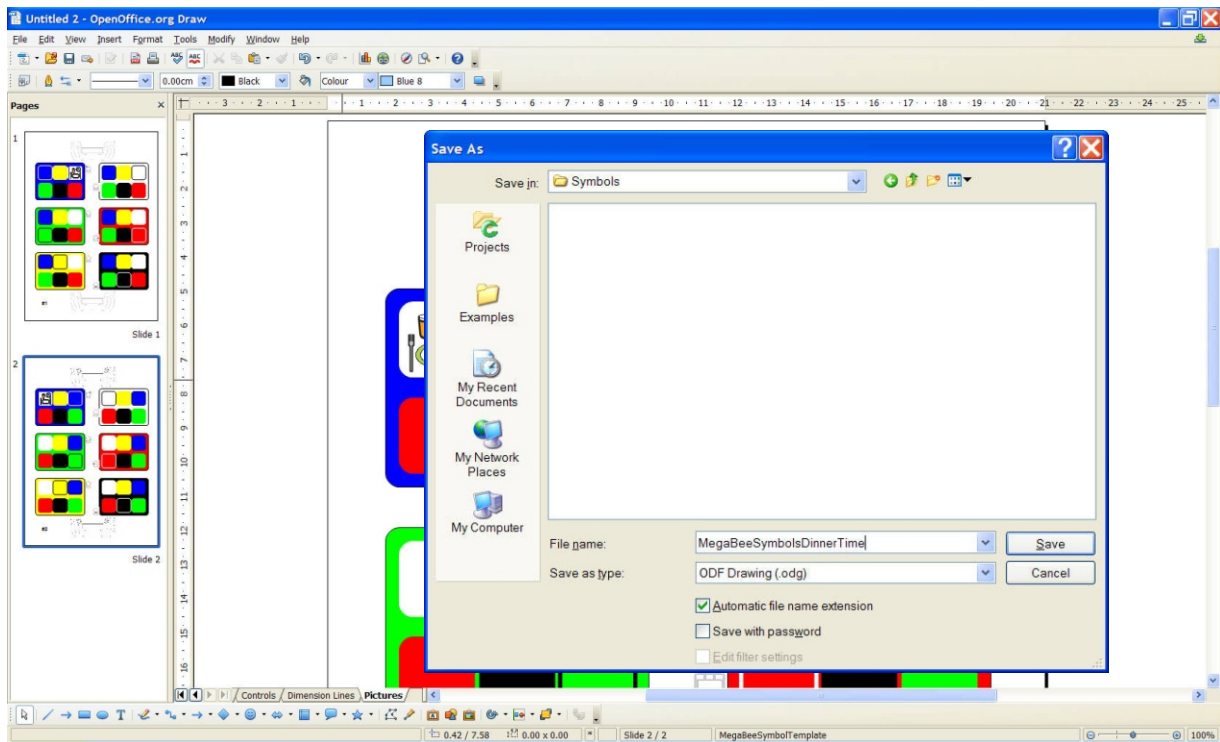


We now need to move the image to the white square in the blue block.



Appendix 4 - OpenOffice.org Draw (...)

Repeat this process for all your pictures, and then save as a document:



Printing this document will produce two sheets of self adhesive labels. The meaning of the symbols should be transferred to **MegaBee** as detailed in the 'Pictures' section earlier in this manual.

